

Hibernation – Not Just for Bears

Putting your house museum “to bed”
for the season

Presenters

- Benjamin Haavik
 - Team Leader, Property Care
- Nicole Chalfant
 - Collection Manager

Agenda

- Historic New England
- Closing for the Season
 - Building and Landscape
 - Interior Collections Prep
- Questions

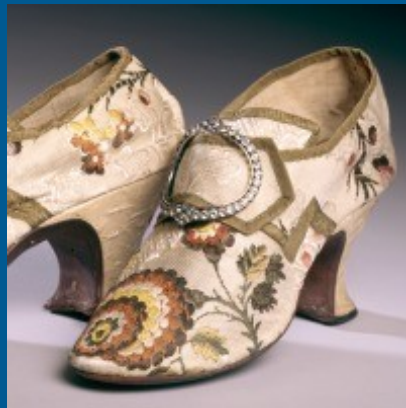
Historic New England

Mission Statement

We serve the public by preserving and presenting New England heritage

Our Vision

Historic New England will be a more public institution by becoming the national model for care of regional heritage buildings, landscapes, and collections and for the sharing of these resources to benefit diverse audiences.



Historic New England

We serve the public by preserving and presenting New England heritage



Collections



Archives and Publications



Educational Programs



Preservation Services



Historic Properties

Historic New England

We serve the public by preserving and presenting New England heritage



Collections



Archives and Publications



Educational Programs



Preservation Services



Historic Properties



Historic Properties



Program Areas: *Historic Properties*



We promise

You'll experience, in a real and personal way, the lives and stories of the individuals who made New England what it is today.

Building and Landscape

- Inspection
- Clean gutters
- Secure openings
- Secure outdoor art and objects
- Turn off and drain any water lines
- Maintain active environmental systems
- Shut down systems or components not in operation over the winter
- Prepare for snow removal

** Taken from the White Paper on “Winterizing your Historic House Museum”*

Inspect the Property



Inspection

Chimney

- Is the mortar intact?
- Are the bricks intact?
- Chimney caps?
- Flashing and joints?



Inspection



Roofs

- Are the shingles lying flat?
- Are there gaps?
- Is there bio growth?
- Flashing, ridge caps, and connections?

Inspection

Gutters and Downspouts

- Are the gutters and downspouts intact?
- Is there damage around the system?



Inspection



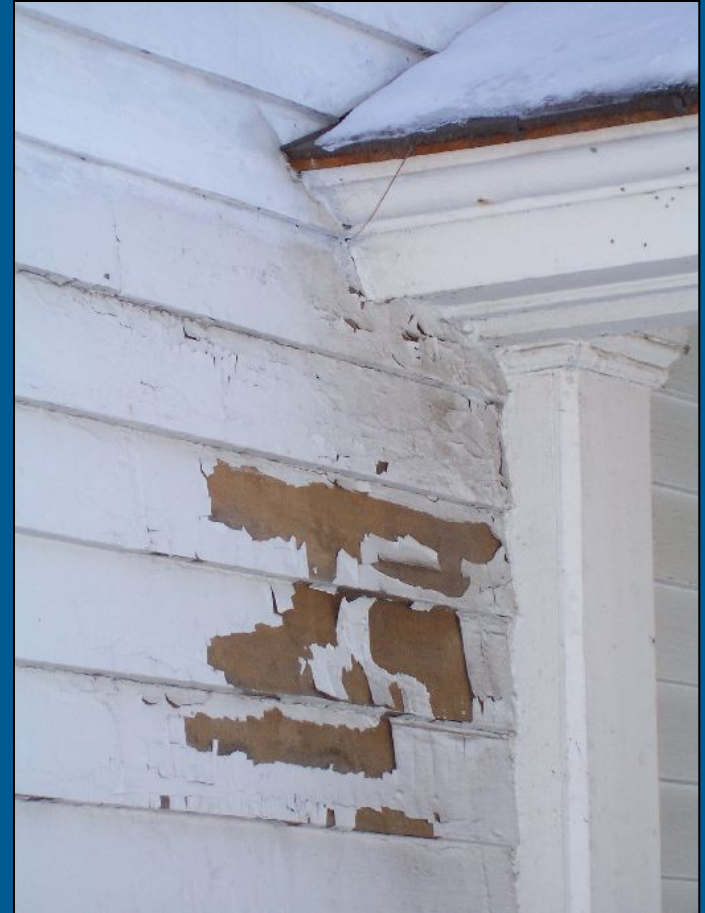
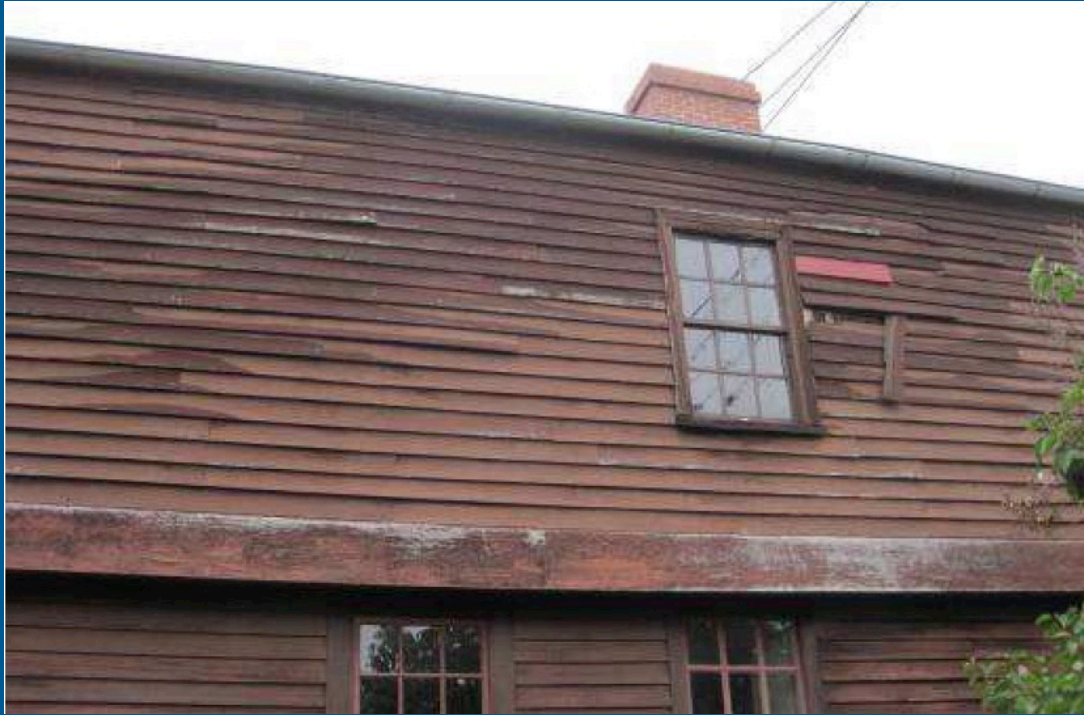
- Are they functioning?
- Is water pooling around the foundation?
- Where does the water go?

Inspection

- Is everything connected?
- What is the ground doing?



Inspection



Cladding

- Does the siding lie flat?
- Are there gaps or other damage visible?

Inspection



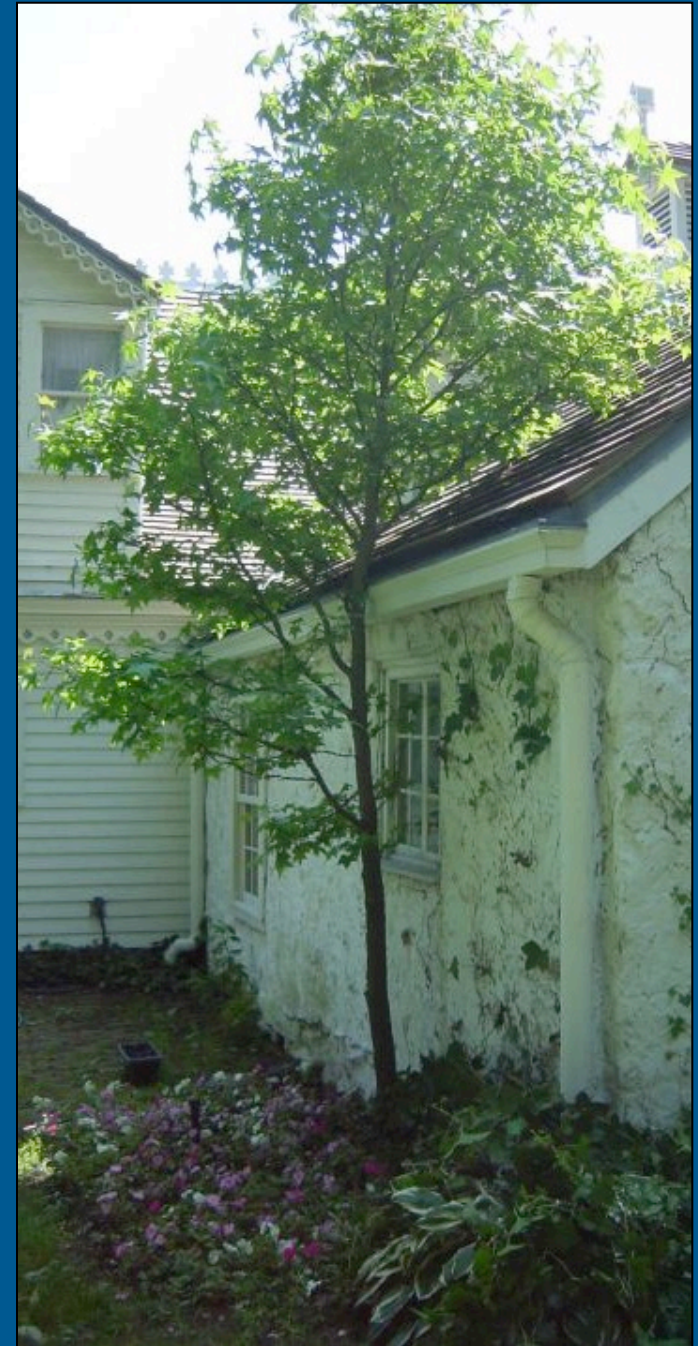
Windows

- Glazing condition
- Sill condition
- Any broken glass?

Inspection

Vegetation

- Proximity of plants?
- Overhanging branches?



Clean Gutters and Maintain Water Dispersion



Tree Care



Secure Doorways, Windows and Skylights



Secure Outdoor Art and Objects



Secure Outdoor Art and Objects



Secure Outdoor Art and Objects



Turn off and Drain any Water Lines

- Seasonal water service from town/city/well
- Lawn/garden irrigation systems
- Exterior hose bibs
- Restrooms/Bathrooms
- Interior sinks



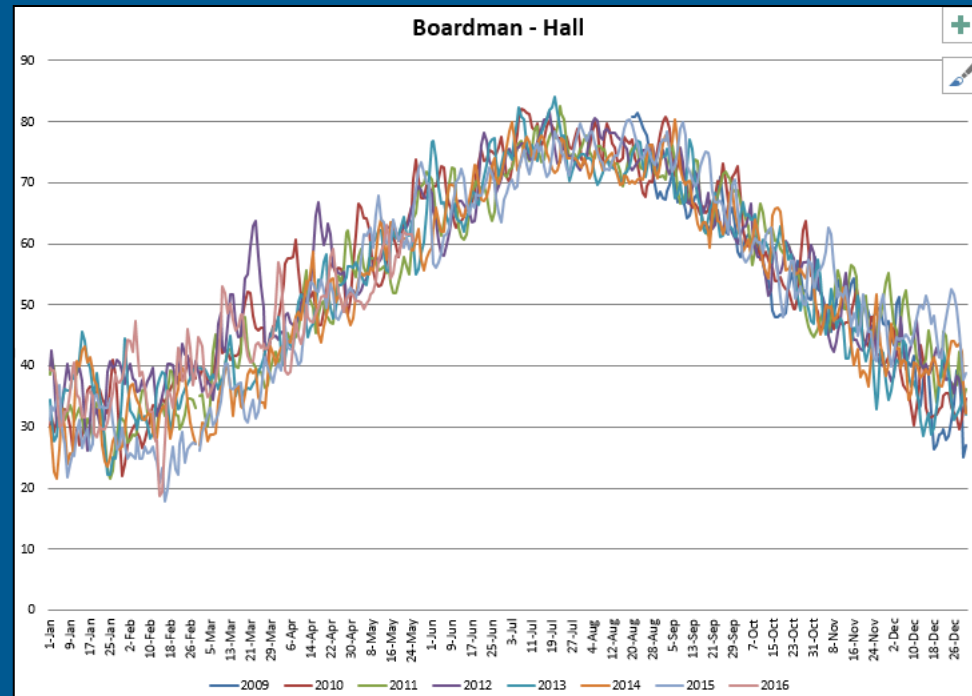
Turn off and Drain any Water Lines

- Drain by gravity method/remove drain plugs/traps/faucets & valves
- Blow out system with compressed air
- Install anti-freeze (glycol) to water lines with inaccessible piping



Environmental Conditions

- To keep the system on or not?
 - Every site is different
 - Monitor your conditions
 - Determine an acceptable RH range for your collections
 - 30% – 60% RH
 - Try it for a season



Maintain Active Environmental Systems



Shut Down Systems or Components not in Operation Over the Winter



Prepare for Snow Removal

- Staking for snow plow
- Snow fences, burlap boxwoods
- Snow removal supplies
 - Sand, shovels, snow rakes (extendable)
- Update emergency kits
 - Update emergency contact list
- Open cabinets underneath sinks
- Temporary weather stripping where it snows “inside”
- Hogs and pigs in the fireplaces
- Generators relocated to accessible spot
- Heat tape turn on (remember to plug in)

Prepare for Snow Removal

- Why remove snow?
 - Maintain emergency access
 - Fuel delivery
 - Tenant access



Prepare for Snow Removal



Prepare for Snow Removal

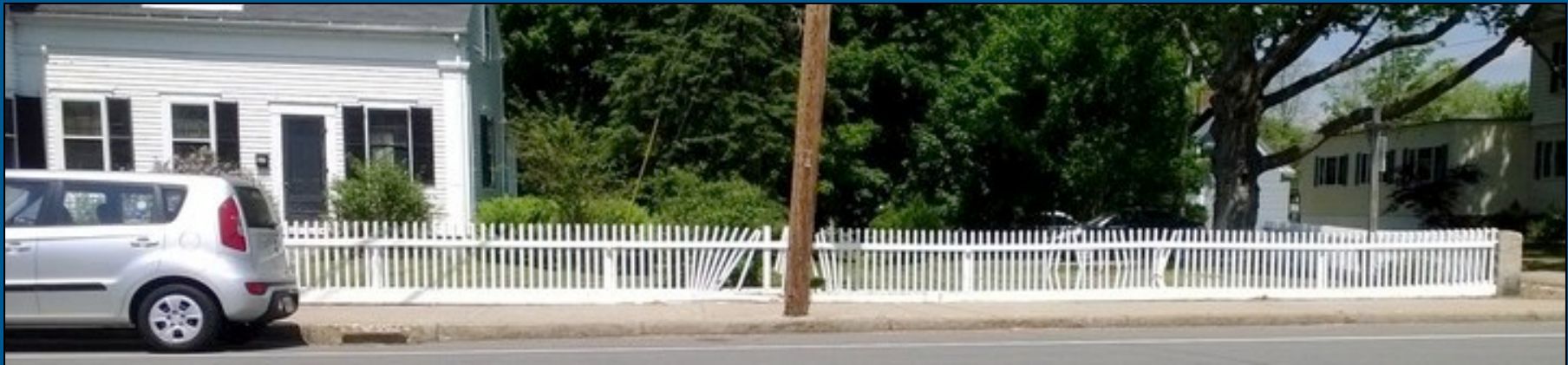


The Perils of Ice and Snow

- Sand vs Snow Melt vs Salt



The Perils of Ice and Snow



Prepare for Snow Removal



The Perils of Ice and Snow



The Perils of Ice and Snow



The Perils of Ice and Snow



The Perils of Ice and Snow



The Perils of Ice and Snow



Collections and Interior Elements

- Thorough cleaning and assessment
- Things to think about:
 - Protect against pest infiltration
 - Prepare for moisture or water
 - Prevent light exposure
- Be prepared!

Cleaning and Assessment



Twice a Year:

- Dust ceiling woodwork first with long-handled duster
- Vacuum historic textiles through a screen - table runners, curtains, pillows, upholstered chairs and settees, etc.
- Vacuum under beds and case furniture
- Vacuum behind drapes and radiators
- Wash windows and plexiglass
- Clean ceramic and glass objects



Cleaning Supplies Used by Historic New England

- Miele Vacuum with rheostat, HEPA filter, horsehair floor brush, and attachments
- Statically charged dusting cloth: DustBunny or Cape Cod Cloth
- Soft, natural-bristle brush with taped ferrule
- Long-handled duster
- Nylon mesh screen with twill tape edges
- Gloves: white cotton and nitrile
- Cotton rags and diapers
- Clean sheets
- Notepad and pencil

Deep Cleaning Products Used by Historic New England

- For painted wood surfaces, floors, and walls:
SimpleGreen – 1 TBL per gallon of water
- For glass windows and objects:
8 parts water, 1 part vinegar, 1 part ethanol
- For ceramic objects:
Triton XL 80N – 1/2 TBL per gallon of water
MUST BE RINSED
- For plexi UV window covers or bonnets:
Brilliance Brand
- For greasy or sooty dirt:
Odorless Mineral Spirits (Naphtha)



Cleaning and Assessment – Onsite storage areas



Cleaning and Assessment – Objects




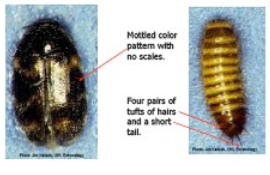

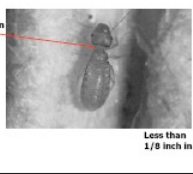



Protect Against Pests - Invertebrates

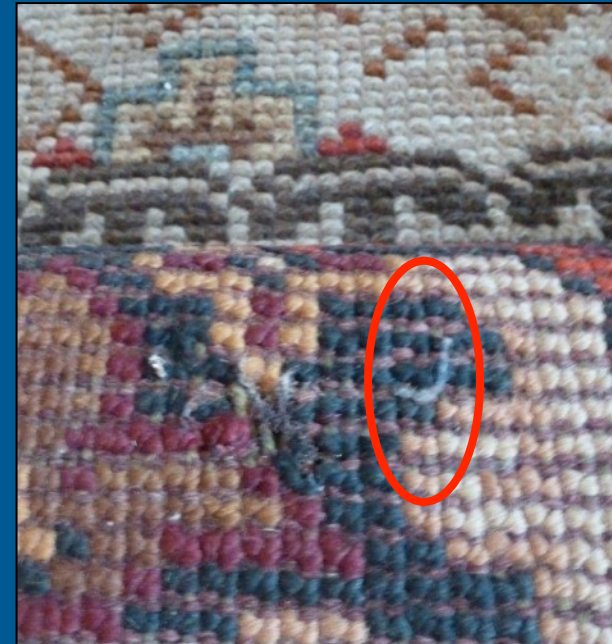
www.museumpests.net



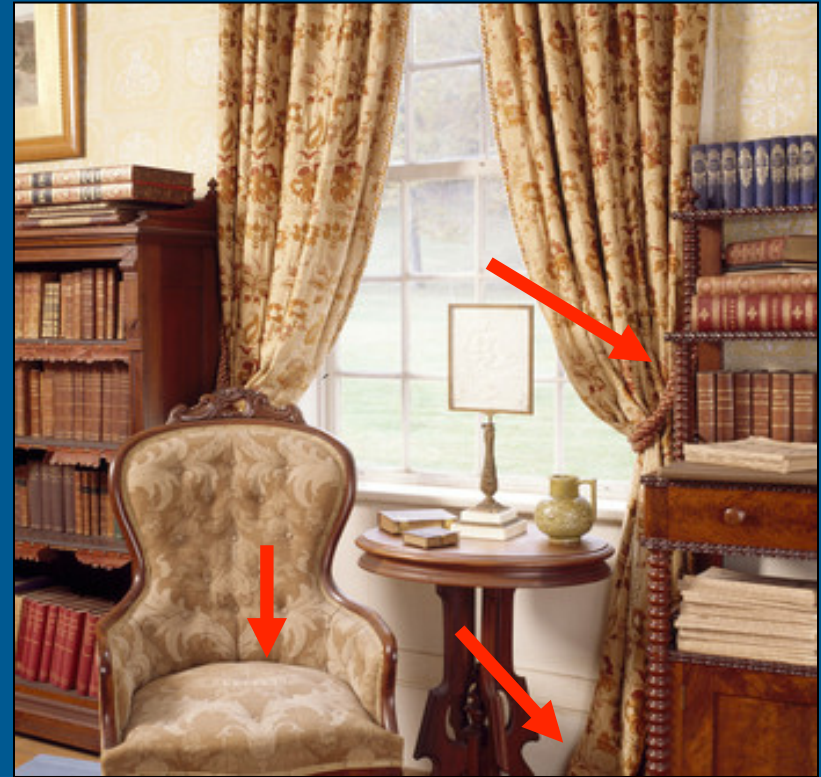
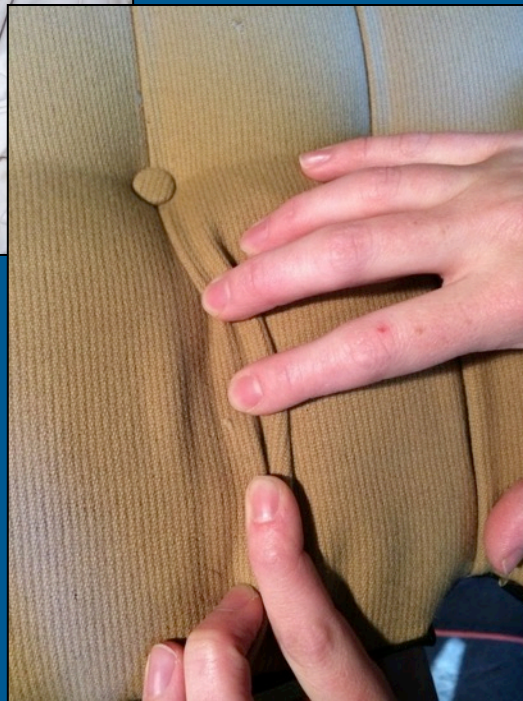
The Dirty Dozen of Museum Pests

<p>1. Webbing Clothes Moth <i>Tineola bispelliella</i></p>  <p>Brown head capsule with no case around body</p> <p>Tuft of reddish orange hair Uniform 10K gold/buff color</p>	<p>2. Case-making Clothes Moth <i>Tinea pellionella</i></p>  <p>Brown or Black head</p> <p>Larvae carry a cocoon like case with them</p>	<p>3. Varied Carpet Beetle <i>Anthrenus verbasci</i></p>  <p>Three segmented club</p> <p>Elongated scales of varied colors</p> <p>Enlarged tuft of hairs</p>
<p>4. Black Carpet Beetle <i>Attagenus</i> spp.</p>  <p>Long body with tuft of hairs</p> <p>Spear shaped antenna club</p> <p>Range of black to brown colored body</p>	<p>5. Hide Beetle & Larder Beetle <i>Dermaptera maculatus</i> & <i>Dermaptera lardius</i></p>  <p>Distinctive brown band with black spots</p> <p>Small points at end of larvae and adult</p> <p>Curved points at end of larvae</p>	<p>6. Warehouse / Cabinet Beetle <i>Trogoderma</i> spp.</p>  <p>Mottled color pattern with no scales</p> <p>Four pairs of tufts of hairs and a short tail</p>
<p>7. Cigarette & Drugstore Beetles <i>Lasioderma serricorne</i> & <i>Stegobium paniceum</i></p>  <p>Saw-toothed antennae</p> <p>Last three segments of antennae elongated</p> <p>Deep pitted lines on wings</p>	<p>8. Silverfish and Firebrats <i>Lepisma saccharinum</i> & <i>Thermobia domestica</i></p>  <p>Long antennae</p> <p>three tail filaments</p> <p>Silvery (Silverfish) or mottled in color (Firebrat)</p>	<p>9. Psocids or Booklouse <i>Psocoptera</i></p>  <p>Constriction at thorax</p> <p>Less than 1/8 inch in length</p>
<p>10. Powderpost Beetle <i>Anobiium punctatum</i> - Wood Boring Pest</p>  <p>Small ridge on thorax</p>	<p>11. Cockroaches <i>Blattella germanica</i> & <i>Periplaneta americana</i></p>  <p>Two black bars on shield</p> <p>Light shading on shield</p> <p>1/2 inch in length 1.5 inches in length</p>	<p>12. House Mouse <i>Mus musculus</i></p>  <p>Tail as long or longer than body</p> <p>Large ears</p> <p>Dark brown to grey body color, light grey underneath</p>

Protect Against Pests - Identify



Protect Against Pests - Identify



Protect Against Pests – Treatment Options



Controlled Atmospheric Treatment – “The Bubble”

Freezing



Protect Against Pests - Vertebrates



Protect Against Pests - Vertebrates



Prepare for Water - Chimneys



Prepare for Water – SNOW!



Prevent Light Exposure



Prepare for the worst and hope for
an uneventful winter.

