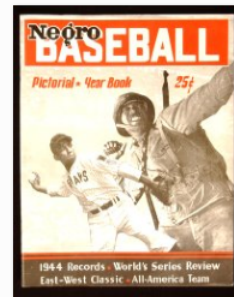
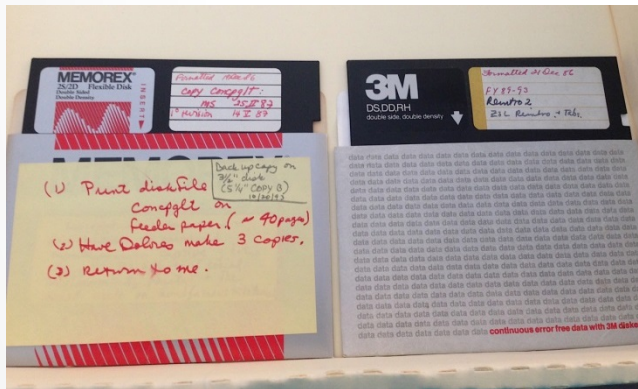


Care & Feeding of Digital Assets: Migration, Preservation & Access



negro_ball_pictorial.tif



olympic_club_score_book.tif



palmer_cap.tif



turley_ball.tif



walter_johnson_pin.tif



washington_nationals_button.tif

What type of media is it?

Digital Audio Tape (1987 – 2005)

www.obsoletemedi...
Apps Smithsonian Archives - ... Archive-It - Smithsoni... Archive-It: Partner Lo... Open Text Media Man... Home - SI Website an... Gale SI Mags Gale Databases Seaside Other bookmarks

Museum Of Obsolete Media

ABOUT AUDIO FORMATS VIDEO FORMATS DATA FORMATS FILM FORMATS GALLERIES LATEST FORMATS

Digital Audio Tape (1987 – 2005)

Digital Audio Tape (DAT) was a digital magnetic audio tape format, initially designed for audio. It was introduced by Sony in 1987.

It used 4mm tape in a cassette, roughly half the size of a Compact Cassette. DAT tapes are between 15 and 180 minutes in length, a 120-minute tape being 60 meters in length.

The Recording Industry Association of America (RIAA) unsuccessfully lobbied against the introduction of DAT devices into the US, but a tax was imposed on DAT recorders and blank media from 1992.

It was never widely adopted by consumers due to its cost, but saw use in professional recording and as a data storage medium (called [Digital Data Storage](#) or DDS).

A small number of albums were commercially released on DAT in the first few years of the format.

In 2005, Sony discontinued its remaining DAT recorders.

Sources / Resources



SIMILAR FORMATS

- [1. Digital Data Storage \(1989 – 2007\)](#)
- [2. Compact Cassette \(1963 – 2000s\)](#)
- [3. Video8 \(1985 – 2000s\)](#)
- [4. Super Advanced Intelligent Tape \(SAIT\) \(2003 – 2010\)](#)

POPULAR TAGS

[12-inch](#) [120mm](#) [180s](#) [1800s](#) [1900s](#) [1910s](#) [1920s](#) [1930s](#) [1940s](#) [1950s](#) [1960s](#) [1970s](#) [1980s](#) [1990s](#) [2000s](#) [2010s](#) [3.5-inch](#) [35mm](#) [4mm](#) [5.25-inch](#) [78rpm](#) [8mm](#) [analogue](#) [audio](#) [broadcasting](#) [cassette](#) [cartridge](#) [Compact](#) [Cassette](#) [compact disc](#) [data](#) [dictation](#) [digital video](#) [disc](#) [disk](#) [dual](#) [Edison](#) [film](#) [flash](#) [floppy](#) [fourth-generation](#) [games](#) [hard-disk](#) [hard-disk](#) [helical scan](#) [IBM](#) [image](#) [JVC](#) [laser](#) [linear](#) [magnetic](#) [magnetic-optical](#) [mobile phones](#) [music](#) [Nintendo](#) [optical](#) [Philips](#) [phonograph](#) [photography](#) [pic](#) [rca](#) [rigid disk](#) [ROM](#) [cartridge](#) [cassette](#) [Second-generation](#) [tape](#) [single](#) [third-generation](#) [solid-state](#) [Sony](#) [synthesizer](#) [tape](#) [vhs](#) [generation](#) [video](#) [voice](#) [24-inch](#) [25-inch](#) [2.5-inch](#)

What do you have?

Location	Wright's Office		
Basic Description of media	CDs, DVDs, zip disk, mini DV		
EREC Asset Description	JPG, DOC, PPT, PDF, TIF, EPS, XLS, HTM, text, video - VOB, MOV		
Location in Collection Information	<input type="button" value="Add New"/>	<input type="button" value="Submit to ERD"/>	

Box Number	Folder Label	EREC Assessment	Other Notes from EREC	Remove
2	Jason Presentation Images, 2003 (1 CD)	1 CD in jewel case with handwri	D1 Label: All Jason Fotos. Volu	
2	Jason XV, Rainforests at the Crossroads, 2003-2004 - Images (1	1 CD in jewel case with pre-pri	D1 Label: Smithsonian IMAGE F	
2	Culebra Video Rough Cut, July 16, 2008 (1 DVD)	1 DVD in jewel case with pre-pi	D1 Label: EFT-STRI_Culebra Rc	
2	STRI Poster, January 2004 (1 CD)	1 CD in jewel case with handwri	D1 Label: STRI Poster 1/04 .cp	
2	Scans for STRI Postcards (1 CD)	1 CD in jewel case with handwri	D1 Label: Scans for postcards t	
2	"The Habitable Planet: A Systems Approach to Environmental S	4 CDs in cases with pre-printed	Commercial CDs - not for dupl	
2	The Open University, S328 Ecology, "The Conundrum of Coexis	1 CD in jewel case with pre-pri	Commercial CD - not for duplic	
2	"Operation Jungle," BBC Program about Barro Colorado Island i	1 CD in jewel case with handwri	Not transferred due to copyrig	
2	Paleontological Treasures Images, 2003-2004 (1 CD)	1 CD in jewel case with handwri	D1 Label: Tesoros Paleoantolo	
2	Cofrins Visiting Panama and Touring STRI - Video and Slideshow	1 CD in jewel case with pre-pri	D1 Label: Panama DVD Jan 200	
2	Ocelot Attack at Barro Colorado Island - Video (1 CD)	1 CD in jewel case with pre-pri	D1 Label: Ocelot Attack at BCI	
2	Educators Connecting Research to the K-16 Classroom, 2002-20	1 CD in jewel case with handwri	D1 Label: ECRC/STRI-C [illegib	
2	"A Global Program of Long-term Tropical Forest Research Tour	1 CD in jewel case with handwri	D1 Label: STRI Biogeographi	

Do no harm



Not write-protected

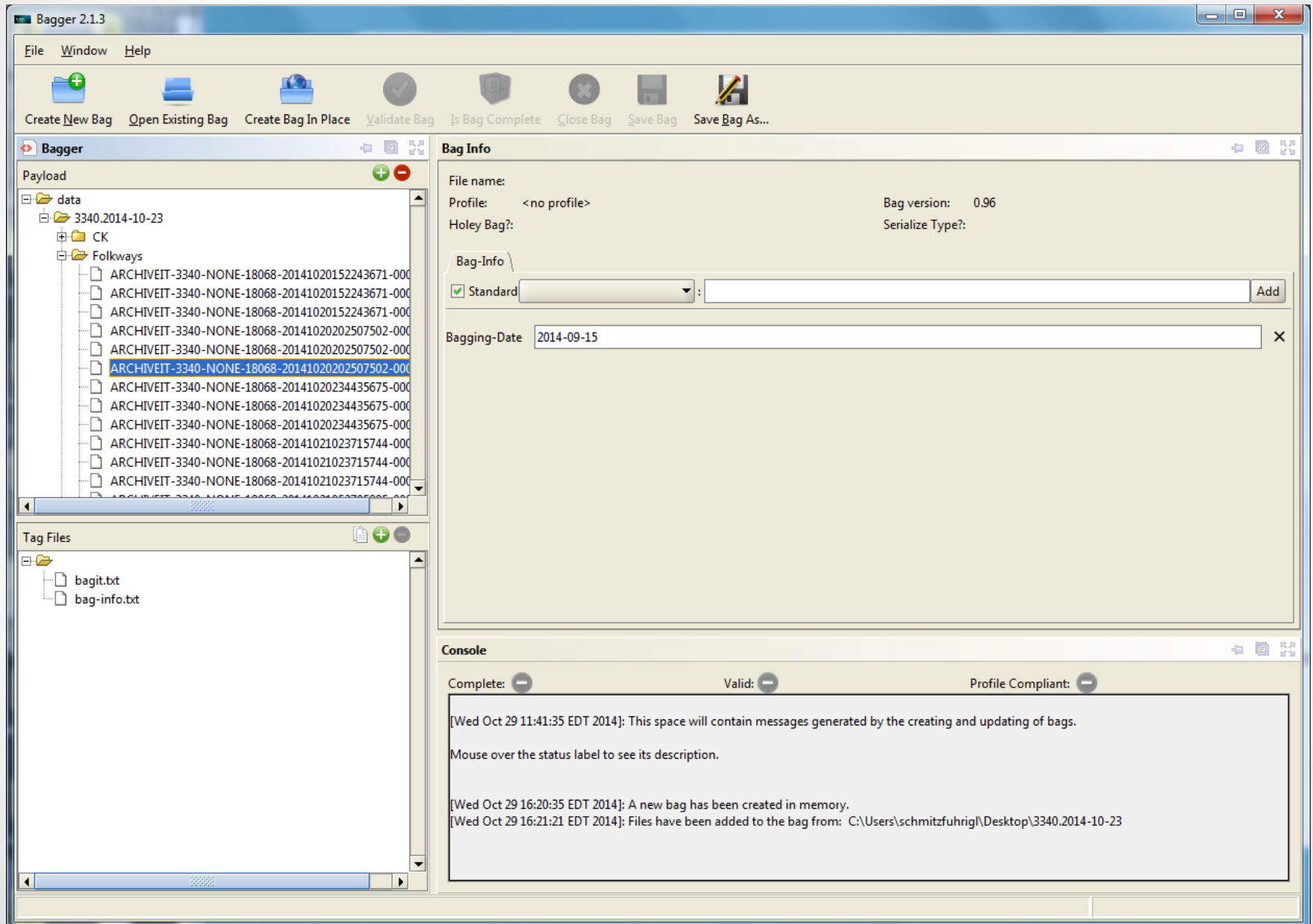


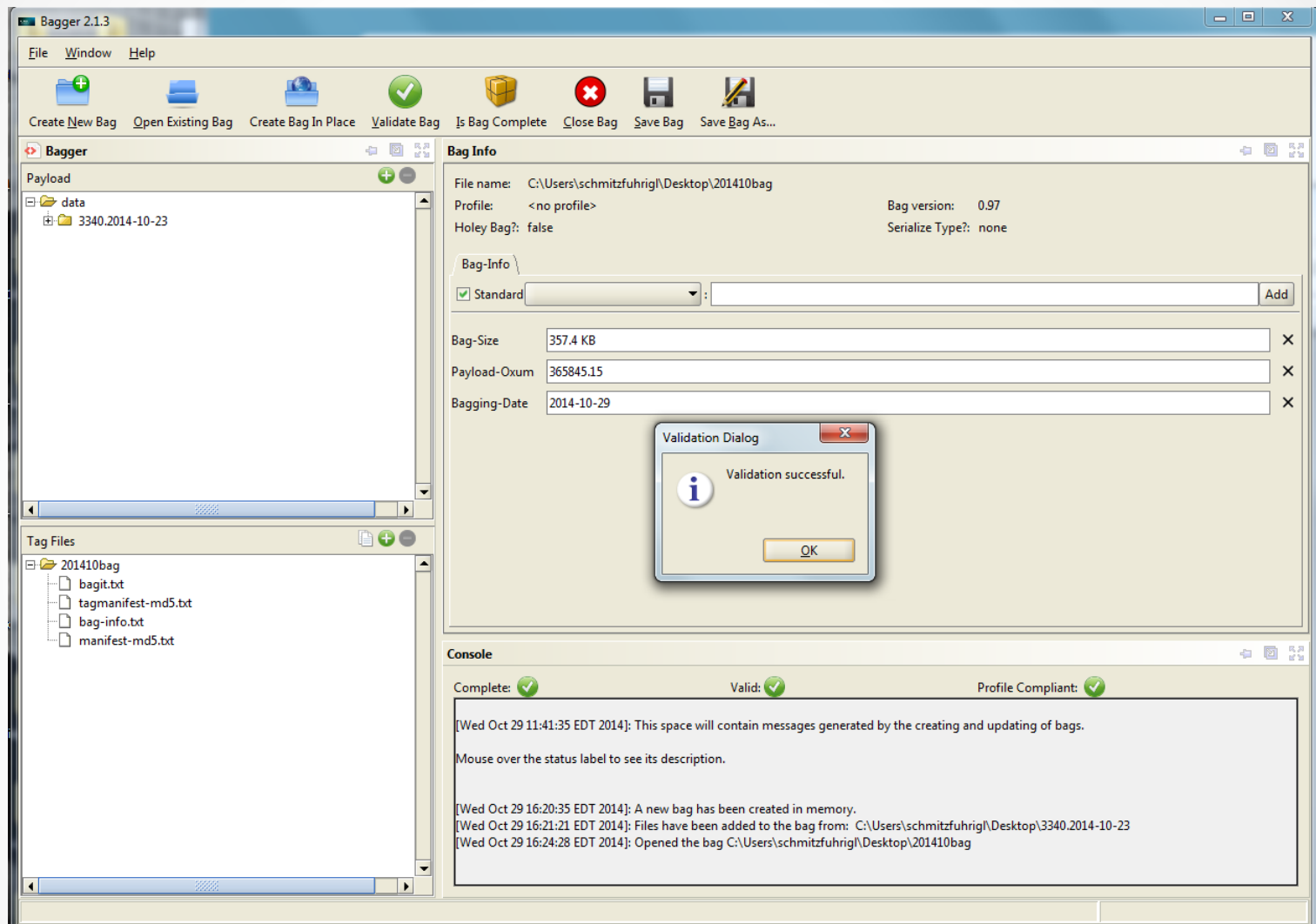
Write-protected

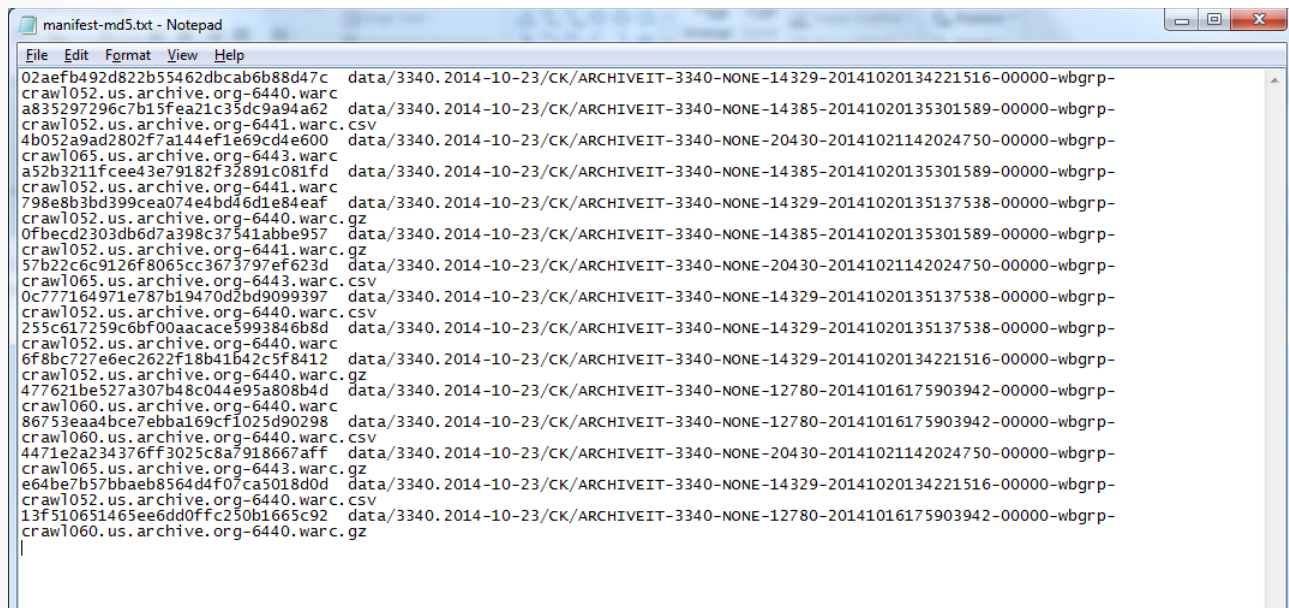
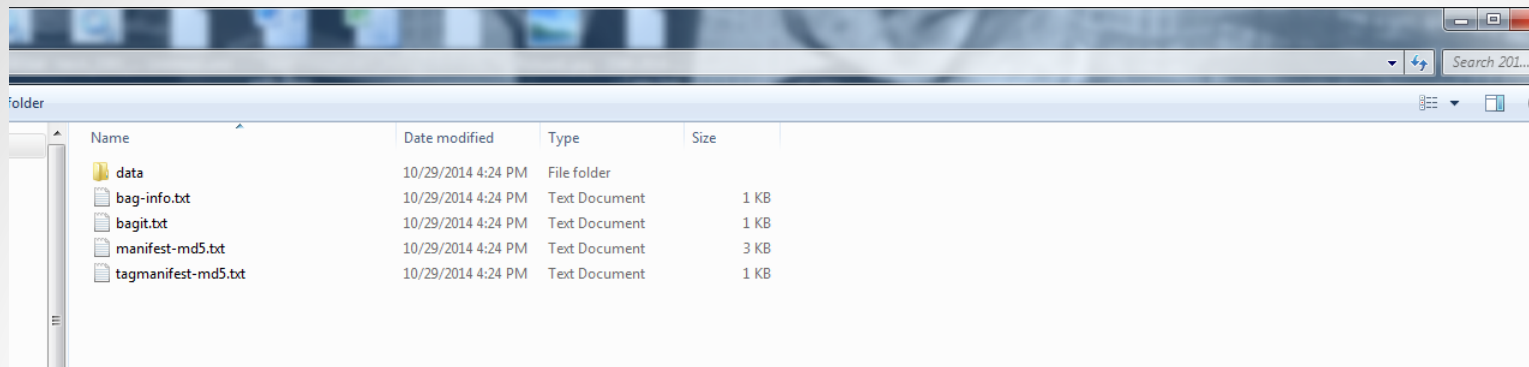


Extreme damage from an adhesive label

File transfer

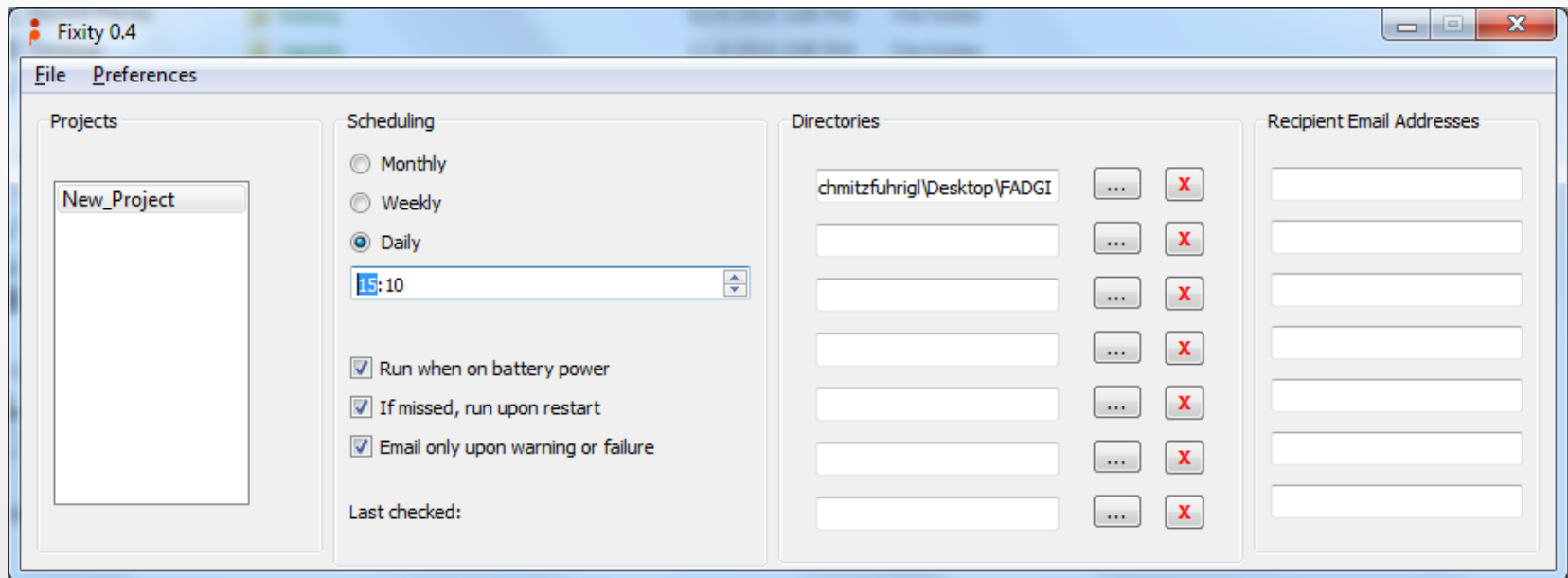






Fixity

- Have the files remained stable? No bits have changed during transfer or over time
- Just because integrity is sound does not mean file is accessible though



New_Project_2014-11-04-150813.tsv - Notepad

File Edit Format View Help

C:\Users\schmitzfuhrig1\Desktop\FADGI;

99 15:10:00 99 99
2014-11-04 15:08:13
||-||0
sha256
1c17ff8eb3a95fb32cb65d066de95be191e5d8e8aeedc7a781c5f2151e41300d
\add_in_video.docx 3868172332655360188904
df572b58d9cd0cc2471b99df095f00a73d38666e30b40c667456b5d3d9663818
RecomPractices-07182014.docx 38681723323145728163860
fc407df4ded7a340179cd45d593e5ddf4c5b31daff9423f15354baf31a95f6ec
07182014_lsf_edit.docx 38681723321048576188669

C:\Users\schmitzfuhrig1\Desktop\FADGI

C:\Users\schmitzfuhrig1\Desktop\FADGI\BDVpt3-

C:\Users\schmitzfuhrig1\Desktop\FADGI\SIA-

fixity_2014-11-04-150813344000_New_Project.tsv - Notepad

File Edit Format View Help

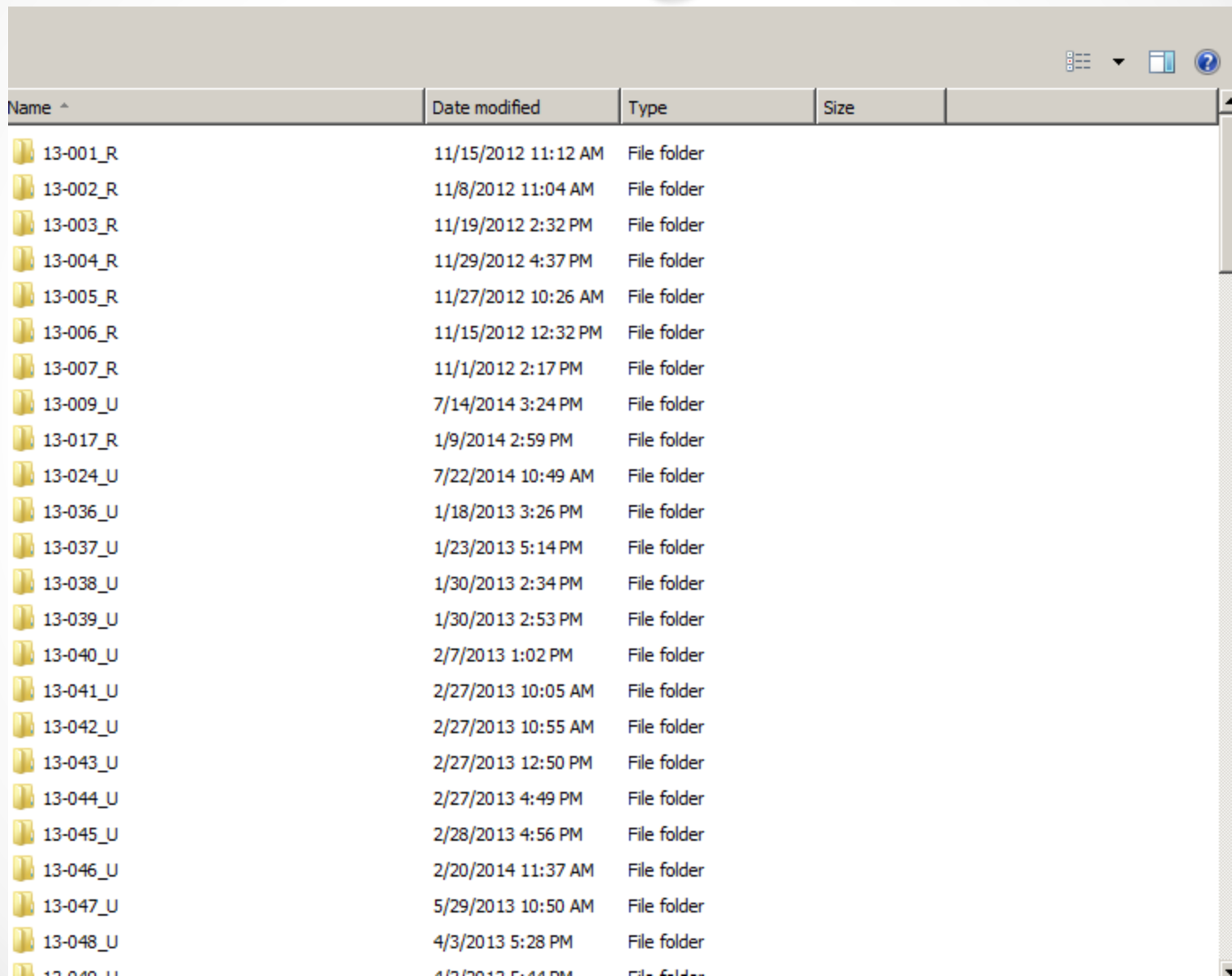
Fixity report
Project name New_Project
Algorithm used sha256
Date 2014-11-04
Total Files 3
Confirmed Files 0
Moved or Renamed Files 0
New Files 3
Changed Files 0
Removed Files 0
New File:
New File:
New File:

fixity_2014-11-04-151239314000_New_Project.tsv - Notepad

File Edit Format View Help

Fixity report
Project name New_Project
Algorithm used sha256
Date 2014-11-04
Total Files 3
Confirmed Files 2
Moved or Renamed Files 0
New Files 0
Changed Files 1
Removed Files 0
Confirmed File: C:\Users\schmitzfuhrig1\Desktop\FADGI\add_in_video.docx
Confirmed File: C:\Users\schmitzfuhrig1\Desktop\FADGI\BDVpt3-RecomPractices-07182014.docx
Changed File: C:\Users\schmitzfuhrig1\Desktop\FADGI\SIA-07182014_lsf_edit.docx

Storage



Name ^	Date modified	Type	Size
13-001_R	11/15/2012 11:12 AM	File folder	
13-002_R	11/8/2012 11:04 AM	File folder	
13-003_R	11/19/2012 2:32 PM	File folder	
13-004_R	11/29/2012 4:37 PM	File folder	
13-005_R	11/27/2012 10:26 AM	File folder	
13-006_R	11/15/2012 12:32 PM	File folder	
13-007_R	11/1/2012 2:17 PM	File folder	
13-009_U	7/14/2014 3:24 PM	File folder	
13-017_R	1/9/2014 2:59 PM	File folder	
13-024_U	7/22/2014 10:49 AM	File folder	
13-036_U	1/18/2013 3:26 PM	File folder	
13-037_U	1/23/2013 5:14 PM	File folder	
13-038_U	1/30/2013 2:34 PM	File folder	
13-039_U	1/30/2013 2:53 PM	File folder	
13-040_U	2/7/2013 1:02 PM	File folder	
13-041_U	2/27/2013 10:05 AM	File folder	
13-042_U	2/27/2013 10:55 AM	File folder	
13-043_U	2/27/2013 12:50 PM	File folder	
13-044_U	2/27/2013 4:49 PM	File folder	
13-045_U	2/28/2013 4:56 PM	File folder	
13-046_U	2/20/2014 11:37 AM	File folder	
13-047_U	5/29/2013 10:50 AM	File folder	
13-048_U	4/3/2013 5:28 PM	File folder	
13-049_U	4/3/2013 5:44 PM	File folder	

Graph

Drives

Clipboard

Export

File Reports

Disk Reporter

Search

Scan Filter

Analysis

Options

Snapshot

Task Scheduler

Analyze Trends

FilterZip

Tools

Event Log

Extension Database

Run as Admin

Map Network Drive

Empty Recycle

Add/Remove

System Protec

Operating System

Completed\Reference\12-558_U\Preserved

Computer Details Bar Graph Pie Graph Folder Map										
Name	Size	Allocated	Files	Folders	Modified	% Parent	Attribs	Type	Owner	
NPM_site-no-external-20111...	14.0 GB	14.0 GB	225	11	9/24/2012 ...	99.22%	D	File folder	S-1-5-21-3089172384-	
NPM_site-no-external-20111...	7.03 GB	7.03 GB	64	0	9/24/2012 ...	49.97%	D	File folder	S-1-5-21-3089172384-	
NPM_site-no-external-20111...	7.02 GB	7.02 GB	60	0	9/24/2012 ...	49.85%	D	File folder	S-1-5-21-3089172384-	
NPM_blog-w-external-2012051421...	53.4 MB	53.4 MB	35	5	9/24/2012 ...	0.37%	D	File folder	S-1-5-21-3089172384-	
NPM_blog-w-external-201205...	45.6 MB	45.6 MB	2	0	9/24/2012 ...	85.37%	D	File folder	S-1-5-21-3089172384-	
NPM_Mobile	34.6 MB	34.6 MB	33	7	9/24/2012 ...	0.24%	D	File folder	S-1-5-21-3089172384-	
NPM_Mobile\Source	34.6 MB	34.6 MB	33	6	9/24/2012 ...	100.00%	D	File folder	S-1-5-21-3089172384-	
NPM_Mobile\Source\NPM-mo...	34.6 MB	34.6 MB	33	5	9/24/2012 ...	100.00%	D	File folder	S-1-5-21-3089172384-	
NPM_Mobile\Source\NPM-mo...	30.8 MB	30.8 MB	8	0	9/24/2012 ...	89.19%	D	File folder	S-1-5-21-3089172384-	
NPM-ar_site-no-external_shallow...	25.5 MB	25.5 MB	33	5	9/24/2012 ...	0.18%	D	File folder	S-1-5-21-3089172384-	
NPM_ar_site-no-external_sha...	20.2 MB	20.2 MB	8	0	9/24/2012 ...	79.26%	D	File folder	S-1-5-21-3089172384-	
NPM_site-no-external-20111042...	19.9 MB	19.9 MB	26	0	9/24/2012 ...	0.14%	D	File folder	S-1-5-21-3089172384-	
NPM_blog-w-external-2012051421...	7.42 MB	7.43 MB	8	0	9/24/2012 ...	13.90%	D	File folder	S-1-5-21-3089172384-	
NPM_ar_site-no-external_sha...	5.23 MB	5.23 MB	1	0	9/24/2012 ...	20.49%	D	File folder	S-1-5-21-3089172384-	
NPM_Mobile\Source\NPM-mobile_si...	3.69 MB	3.69 MB	1	0	9/24/2012 ...	10.68%	D	File folder	S-1-5-21-3089172384-	
NPM_site-no-external-20111042...	3.14 MB	3.30 MB	46	5	9/24/2012 ...	0.02%	D	File folder	S-1-5-21-3089172384-	
NPM_site-no-external-20111042...	2.02 MB	2.03 MB	3	0	9/24/2012 ...	0.01%	D	File folder	S-1-5-21-3089172384-	
NPM_site-no-external-20111...	1.92 MB	1.99 MB	19	1	9/24/2012 ...	61.43%	D	File folder	S-1-5-21-3089172384-	
NPM_site-no-external-20111...	1.88 MB	1.89 MB	2	0	9/24/2012 ...	97.90%	D	File folder	S-1-5-21-3089172384-	
NPM_site-no-external-20111042...	1.53 MB	1.54 MB	14	0	9/24/2012 ...	0.01%	D	File folder	S-1-5-21-3089172384-	
NPM_site-no-external-20111...	1.19 MB	1.26 MB	18	1	9/24/2012 ...	38.13%	D	File folder	S-1-5-21-3089172384-	
NPM_site-no-external-20111...	1.15 MB	1.16 MB	1	0	9/24/2012 ...	96.62%	D	File folder	S-1-5-21-3089172384-	

Next steps

- Can you view the file? WordStar vs. PDF?
 - Migration – converting the file usually when at risk
 - Normalization – converting the file regardless to preservation formats when ingesting/taking in

```

C:TEST                                P01 L07 C17 Insert Align
===== EDIT MENU =====
CURSOR      SCROLL      ERASE      OTHER      MENUS
^E up        ^W up        ^G char     ^J help      ^O onscreen format
^X down      ^Z down      ^T word     ^I tab       ^K block & save
^S left      ^R up screen ^Y line     ^U turn insert off ^P print controls
^D right     ^C down      Del char    ^B align paragraph ^Q quick functions
^A word left screen    ^U unerase  ^N split the line  Esc shorthand
^F word right

L-----?-----?-----?-----?-----?-----?-----?-----?-----?-----R

                                A centred title

The quick brown fox jumped over the lazy dog

^BSome bold text^B
^Ssome underlined ^S_
^YSome italic text^Y

Display Centre ChkRest ChkWord Del Blk HideBlk MoveBlk CopyBlk Beg Blk End Blk
1 Help 2 Undo 3 Undrln 4 Bold 5 DelLine 6 DelWord 7 Align 8 Ruler 9 Save & 0 Done

```

Files

- Word processing and text documents
- Spreadsheets
- Images and graphics
- Audio and video
- Websites/social media
- Email
- Computer Assisted Design
- Databases

Format Identification

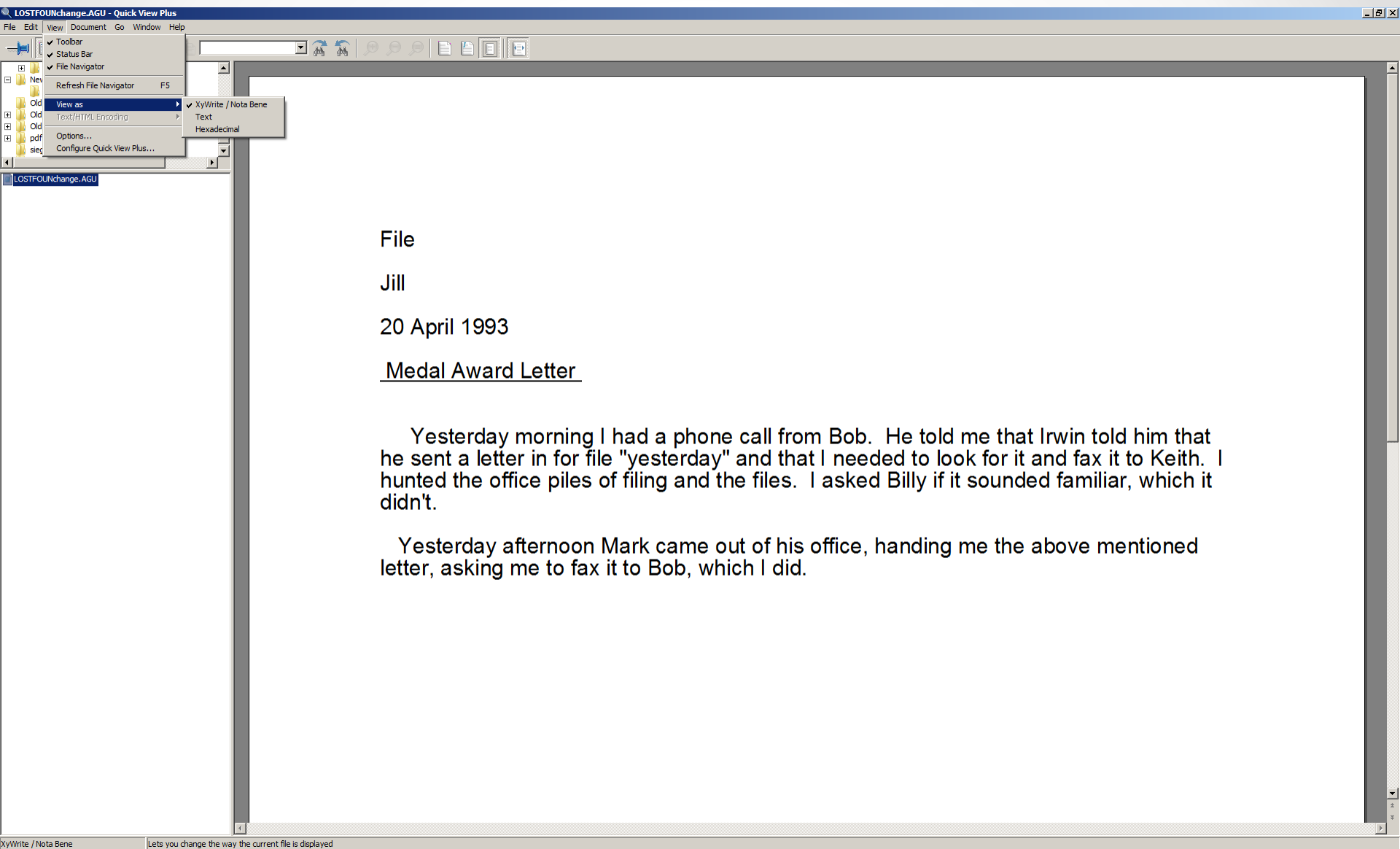
DROID v6.1.3

File Edit Run Filter Report Tools Help

New Open Save Export Add Remove Start Pause Filter On Report

Untitled-4 x

Resource	Extension	Size	Last modified	Ids	Format	Version	Mime type	PUID	Method	Hash
BARSONY.REC	rec	1.9 KB	7/22/93 9:44 AM		WordPerfect for MS-DOS/...	5.1	vnd.wordperfect	x-fmt/394	Signature	a7c63ad6c965f3a6838ad...
BARSONY.TXT	txt	2.2 KB	8/17/93 12:58 PM		WordPerfect for MS-DOS/...	5.1	vnd.wordperfect	x-fmt/394	Signature	6e4fa781e69d5d286fb5ff...
BENNEWIT		1,014 bytes	9/14/93 11:32 AM		WordPerfect for MS-DOS/...	5.1	vnd.wordperfect	x-fmt/394	Signature	831867744f20f65e8399...
BOSWORTH		840 bytes	7/19/93 10:03 AM		WordPerfect for MS-DOS/...	5.1	vnd.wordperfect	x-fmt/394	Signature	3139dafb81dea95407a70...
CALDWELL		964 bytes	7/27/93 4:44 PM		WordPerfect for MS-DOS/...	5.1	vnd.wordperfect	x-fmt/394	Signature	dd567671bf1bcb6d38d53...
CHAFFEE.MMT	mmt	1.4 KB	7/9/93 12:05 PM		WordPerfect for MS-DOS/...	5.1	vnd.wordperfect	x-fmt/394	Signature	096ff97d0d0596a1a1a1c1...
COHEN		1.8 KB	7/9/93 9:34 AM		WordPerfect for MS-DOS/...	5.1	vnd.wordperfect	x-fmt/394	Signature	3bc33ea9a135e7866353c...
CRISWELL.CH	ch	1.5 KB	7/28/93 5:58 PM		WordPerfect for MS-DOS/...	5.1	vnd.wordperfect	x-fmt/394	Signature	e03ee15ec6ae1b7ede616...
CRISWELL.RR	rr	902 bytes	7/12/93 5:09 PM		WordPerfect for MS-DOS/...	5.1	vnd.wordperfect	x-fmt/394	Signature	6ce18b48fe365d26edd55...
DAVIS		1.4 KB	7/28/93 5:27 PM		WordPerfect for MS-DOS/...	5.1	vnd.wordperfect	x-fmt/394	Signature	c314f38c9f6fb139818c91f...
DAVIS.TXT	txt	854 bytes	7/28/93 5:28 PM		Plain Text File		text/plain	x-fmt/111	Extension	90e99d157fdc7e1dd4988...
DUBINSKI.REC	rec	2 KB	7/20/93 11:06 AM		WordPerfect for MS-DOS/...	5.1	vnd.wordperfect	x-fmt/394	Signature	1062a4de423cf5a6494b...
FABRICAN		916 bytes	7/9/93 1:04 PM		WordPerfect for MS-DOS/...	5.1	vnd.wordperfect	x-fmt/394	Signature	fa0bba385e3bf9e74de66...
FAZIO.IRC	irc	2.5 KB	7/16/93 10:51 AM		WordPerfect for MS-DOS/...	5.1	vnd.wordperfect	x-fmt/394	Signature	3e68e8cd8540547101b3f...
FAZIO2.IRC	irc	1.6 KB	7/20/93 9:15 AM		WordPerfect for MS-DOS/...	5.1	vnd.wordperfect	x-fmt/394	Signature	2970905a42bc4d5274edc...
FORMAN		1.1 KB	7/1/93 1:23 PM		WordPerfect for MS-DOS/...	5.1	vnd.wordperfect	x-fmt/394	Signature	2bbda64f17129432fa436...
FREEMAN		1.3 KB	7/26/93 2:09 PM		WordPerfect for MS-DOS/...	5.1	vnd.wordperfect	x-fmt/394	Signature	dba742c3e8d1941c29f56...
GEORGI		4 KB	7/30/93 3:21 PM		WordPerfect for MS-DOS/...	5.1	vnd.wordperfect	x-fmt/394	Signature	4da3ac2fa9c30ecbaaf75c...
GEORGI.TXT	txt	3.7 KB	7/29/93 1:54 PM		Plain Text File		text/plain	x-fmt/111	Extension	cb71cf75a8e2d1b80fc248...
GEORGI2.TXT	txt	3.6 KB	7/30/93 4:38 PM		Plain Text File		text/plain	x-fmt/111	Extension	560021b800c4d0c99cb8cf...
GOLD2		1.3 KB	7/29/93 5:13 PM		WordPerfect for MS-DOS/...	5.1	vnd.wordperfect	x-fmt/394	Signature	6292ee37b0feca5e61a23...
GOLDLTR		2.7 KB	7/28/93 5:50 PM		WordPerfect for MS-DOS/...	5.1	vnd.wordperfect	x-fmt/394	Signature	74ab28ffc404d483638332...
HARRUS		1.3 KB	6/29/93 11:17 AM		WordPerfect for MS-DOS/...	5.1	vnd.wordperfect	x-fmt/394	Signature	2df3be7ad02e1411f0861f...
JJOSEPH		999 bytes	7/12/93 10:28 AM		WordPerfect for MS-DOS/...	5.1	vnd.wordperfect	x-fmt/394	Signature	3c7c75b5925b503ce4ce8...
LESSER		983 bytes	7/12/93 10:26 AM		WordPerfect for MS-DOS/...	5.1	vnd.wordperfect	x-fmt/394	Signature	708e635190a2a081da223...
LEWIS		1.2 KB	7/9/93 11:50 AM		WordPerfect for MS-DOS/...	5.1	vnd.wordperfect	x-fmt/394	Signature	e62428f150e4ceb39c817...
MATTHEWS		5.8 KB	7/2/93 4:58 PM		WordPerfect for MS-DOS/...	5.1	vnd.wordperfect	x-fmt/394	Signature	e8e9c0a4a0ff65cf26ba8...



■ **JPEG**

- [JPEG](#), JPEG Image Encoding Family
- [JPEG DCT BL](#), JPEG DCT Compression Encoding, Baseline
- [JPEG DCT PRG](#), JPEG DCT Compression Encoding, Progressive
- [JPEG DCT EXT](#), JPEG DCT Compression Encoding, Extensions
- [JPEG orig LL](#), JPEG Original Lossless Compression (ISO/IEC 10918)
- [JPEG-LS](#), JPEG Lossless Compression(ISO/IEC 14995)
- [JFIF 1 02](#), JPEG File Interchange Format, Version 1.02
- [SPIFF](#), Still Picture Interchange Format
- [JPEG EXIF](#), JPEG Encoded File with Exif Metadata

■ **JPEG 2000 Encodings**

- [J2K C](#), JPEG 2000 Part 1, Core Coding System
- [J2K C LL](#), JPEG 2000 Part 1, Core Coding, Lossless Compression
- [J2K C LSY](#), JPEG 2000 Part 1, Core Coding, Lossy Compression
- [J2K C Profile 0](#), JPEG 2000 Part 1, Core Coding, Profile 0
- [J2K C Profile 1](#), JPEG 2000 Part 1, Core Coding, Profile 1
- [J2K C Profile 3](#), JPEG 2000 Part 1, Core Coding, Profile 3
- [J2K C Profile 4](#), JPEG 2000 Part 1, Core Coding, Profile 4
- [J2K C BIFF 01 00](#), JPEG 2000 Part 1, Core Coding, BIFF Profile (v. 01.00)
- [J2K C NDNP](#), JPEG 2000 Part 1, Core Coding, NDNP Profile
- [J2K EXT](#), JPEG 2000 Part 2, Coding Extensions

■ **JPEG 2000 File Formats**

- [JP2 FF](#), JPEG 2000 Part 1 (Core) jp2 File Format
- [JPX FF](#), JPEG 2000 Part 2 (Extensions) jpf File Format
- [JPM FF](#), JPEG 2000 Part 6 (Compound) jpm File Format

■ **JPEG 2000 File Formats with Encoded Bitstreams**

- [JP2 J2K C LL](#), JP2 File Format with JPEG 2000 Core Coding, Lossless
- [JP2 J2K C LSY](#), JP2 File Format with JPEG 2000 Core Coding, Lossy
- [JP2 J2K C Profile 0](#), JP2 File Format with JPEG 2000 Core Coding, Profile 0
- [JP2 J2K C Profile 1](#), JP2 File Format with JPEG 2000 Core Coding, Profile 1
- [JP2 J2K C Profile 3](#), JP2 File Format with JPEG 2000 Core Coding, Profile 3
- [JP2 J2K C Profile 4](#), JP2 File Format with JPEG 2000 Core Coding, Profile 4
- [JP2 J2K C BIFF 01 00](#), JP2 File Format with JPEG 2000 Core Coding, BIFF Profile (v. 01.00)
- [JP2 J2K C NDNP](#), JP2 File Format with JPEG 2000 Core Coding, NDNP Profile

■ **JSON**

- [JSON](#), JSON (Javascript Object Notation)

K

■ **KDC**

- KDC included in [CAM RAW](#), Camera Raw Formats (Group Description)

■ **KML**

- [KML 2.2](#), Version 2.2

Word processing

Lewis_and_Clark_Press_Release.doc [Compatibility Mode] - Microsoft Word

File Home Insert Page Layout References Mailings Review View Acrobat

Clipboard Font Paragraph Styles Editing

Smithsonian
National Museum of Natural History

News

Media only: Randall Kremer (202) 633-2950
Michele Urie (202) 633-2950

Public only: (202) 633-1000

May 4, 2006

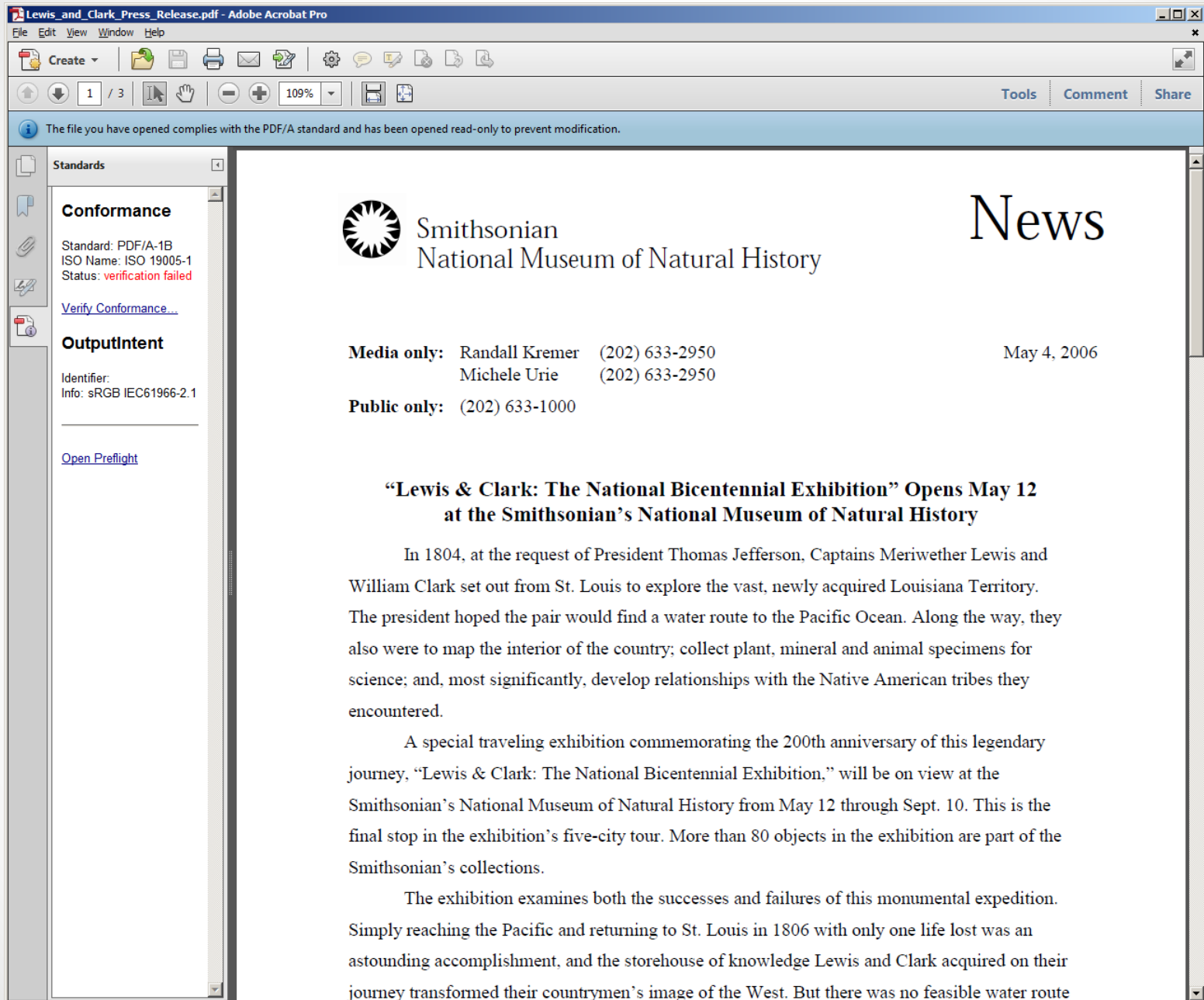
**“Lewis & Clark: The National Bicentennial Exhibition” Opens May 12
at the Smithsonian’s National Museum of Natural History**

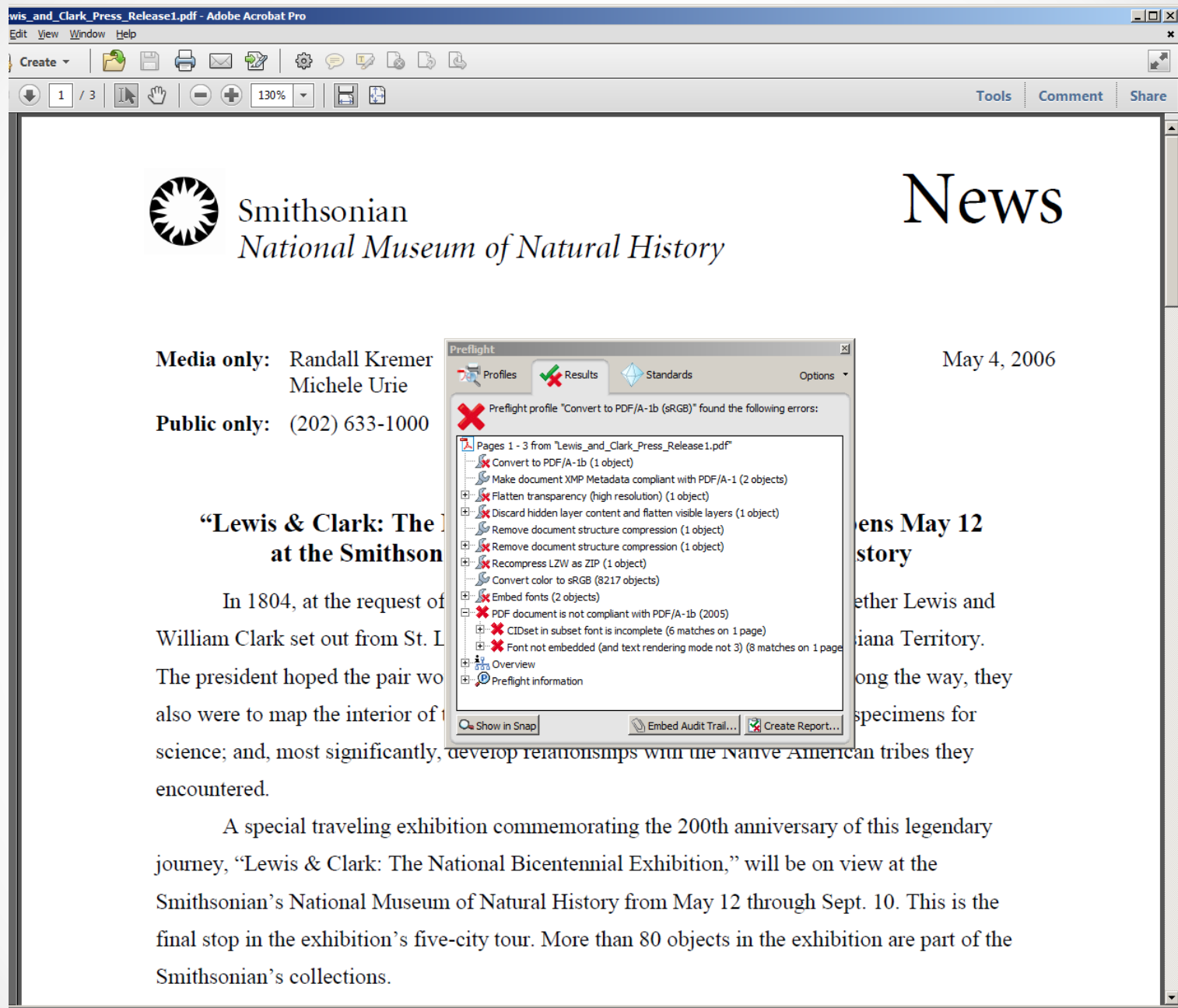
In 1804, at the request of President Thomas Jefferson, Captains Meriwether Lewis and William Clark set out from St. Louis to explore the vast, newly acquired Louisiana Territory. The president hoped the pair would find a water route to the Pacific Ocean. Along the way, they also were to map the interior of the country; collect plant, mineral and animal specimens for science; and, most significantly, develop relationships with the Native American tribes they encountered.

A special traveling exhibition commemorating the 200th anniversary of this legendary journey, “Lewis & Clark: The National Bicentennial Exhibition,” will be on view at the Smithsonian’s National Museum of Natural History from May 12 through Sept. 10. This is the final stop in the exhibition’s five-city tour. More than 80 objects in the exhibition are part of the Smithsonian’s collections.

The exhibition examines both the successes and failures of this monumental expedition. Simply reaching the Pacific and returning to St. Louis in 1806 with only one life lost was an astounding accomplishment, and the storehouse of knowledge Lewis and Clark acquired on their journey transformed their countrymen’s image of the West. But there was no feasible water route

Page: 1 of 3 Words: 1,081 132%





Revision of Some Polychaetes (Polynoidae) of the Subfamily
Polynoinae Kinberg, Restricted, and the New Subfamily Enipoinae

Pettibone, Marian H. Revision of Some Polychaetes (Polynoidae) of the Subfamily Polynoinae Kinberg, Restricted, and the New Subfamily Enipoinae. Smithsonian Contributions to Zoology,

Accession 10-052

ned Paragraph Numbers
¶ AÆ(# h+Æÿ) 2 + S B ½ obL (ht-Aligned Paragraph Number
¶ AA □, s, st AÆ(: AA, ¶ AA, s, st AÆ@-
aph Numbers
AA ,st+h+ # AÆ(#h+Æÿ) 2 + sh +q it A-

Spreadsheets

Slide No./Photo Source	Description	digitized	filename
1			
2			
3	Plants		
4	No number Fossil Rose - Oligocene USNM # 192338 <i>Rosa hilliae</i> Lesquereaux	yes	nonum_lesquereaux_600dpi
5	85-6820 Cretaceous Plant Cat. # 3187 <i>Frenelopsis ramosissima</i>	yes	85-6820_fossilplant_72dpi.jpg
6	85-6823 Carboniferous seed fern USNM # P13857 <i>Pecopteris</i>	yes	85-6823_fossilplant_72dpi.jpg
7	85-6826 Fossil cone <i>Lebachia piniformis</i> Age?	yes	85-6826_fossilcone_72dpi.jpg
8	85-6827 Fossil ferns Carboniferous	yes	85-6827_fossilcone_72dpi.jpg
9	82-2409 Fossil ferns Carboniferous Cat. # 267249	yes	82-2409_fossilplant_72dpi.jpg
10	85-6831 Pennsylvanian (early Angiosperm) Cat. # 40278 <i>Stellata schlotheim</i>	yes	85-6831_fossilplant_72dpi.jpg
11	N/A <i>Anisomeris nbeiodes v. tomentosa</i> - fossil leaf - Eocene	yes	fossileaf_anis_rib1.jpg
12	N/A modern leaves	yes	modernleaf1.jpg
13	85-6832 Carboniferous seed/nut Cat. # 24734		
14	10.Fs <i>Nidulites pyriformis</i> Dasycladacian alga-Cambrian	yes	10-Fs_Nidulites_600dpi.jpg
15	23.Fs <i>Nidulites pyriformis</i> Dasycladacian alga-Cambrian	yes	23-Fs_Nidulites_600dpi.jpg
16	taken w/dig. Camera Bennettiales trunk on display in exhibits. USNM 42379, Late Cretaceous, about 105 mya, Laurel Race Track, Laurel, Prince Georges County, MD. Cycadeoids get their name because they look like modern cycads. Modern cycads produce pollen and seeds in separate plants and most have cones. In most cycadeoids, however, each plant produced both pollen and seeds in a flowerlike structure. Trunks of fossil cycadeoids are marked by diamond-shaped leaf scars arranged in spirals.	yes	bennettiales_exhibit1.jpg
17	No number <i>Cycadeoides marylandica</i> (bennettiales trunk on exhibit). Early Cretaceous, Anne Arundel County, MD. Black + White.	yes	bennet_cycadeoidea_b+w_300dpi.jpg
18	Jonathan Wingerath Cross section through a fossil oak tree. Miocene-Holocene. <i>Quercus</i> sp. Oregon.	yes	quercus_sp_plant.jpg
19	S. Wing A common stream-side tree during the Paleocene and Eocene in North America. Living relatives of this species are native only to East Asia. <i>Cercidiphyllum genetrix</i> . WY.	yes	Cercidiphyllum.jpg
	Relatives of the living sycamores (<i>Macginitiea</i>) were common trees on Paleocene watercourses. The dawn redwood (<i>Metasequoia</i>) was an important tree in swamps. Dawn redwood was first described on the basis of fossil specimens, then later		



Images



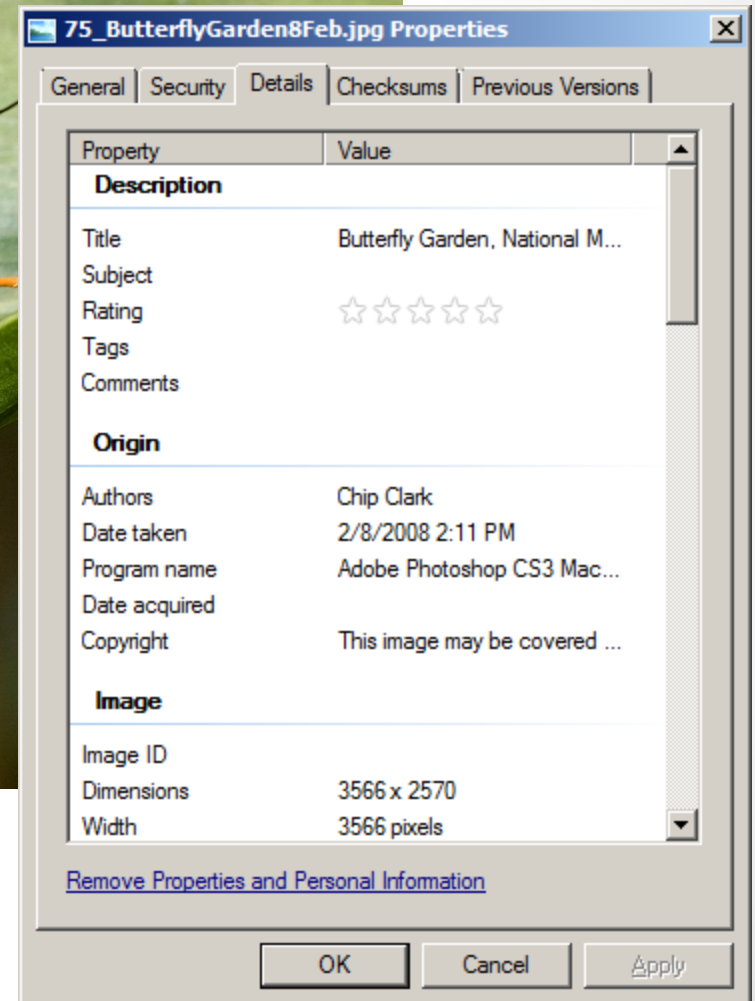
*Digitized image
SIA2007-0176 from 02-082*

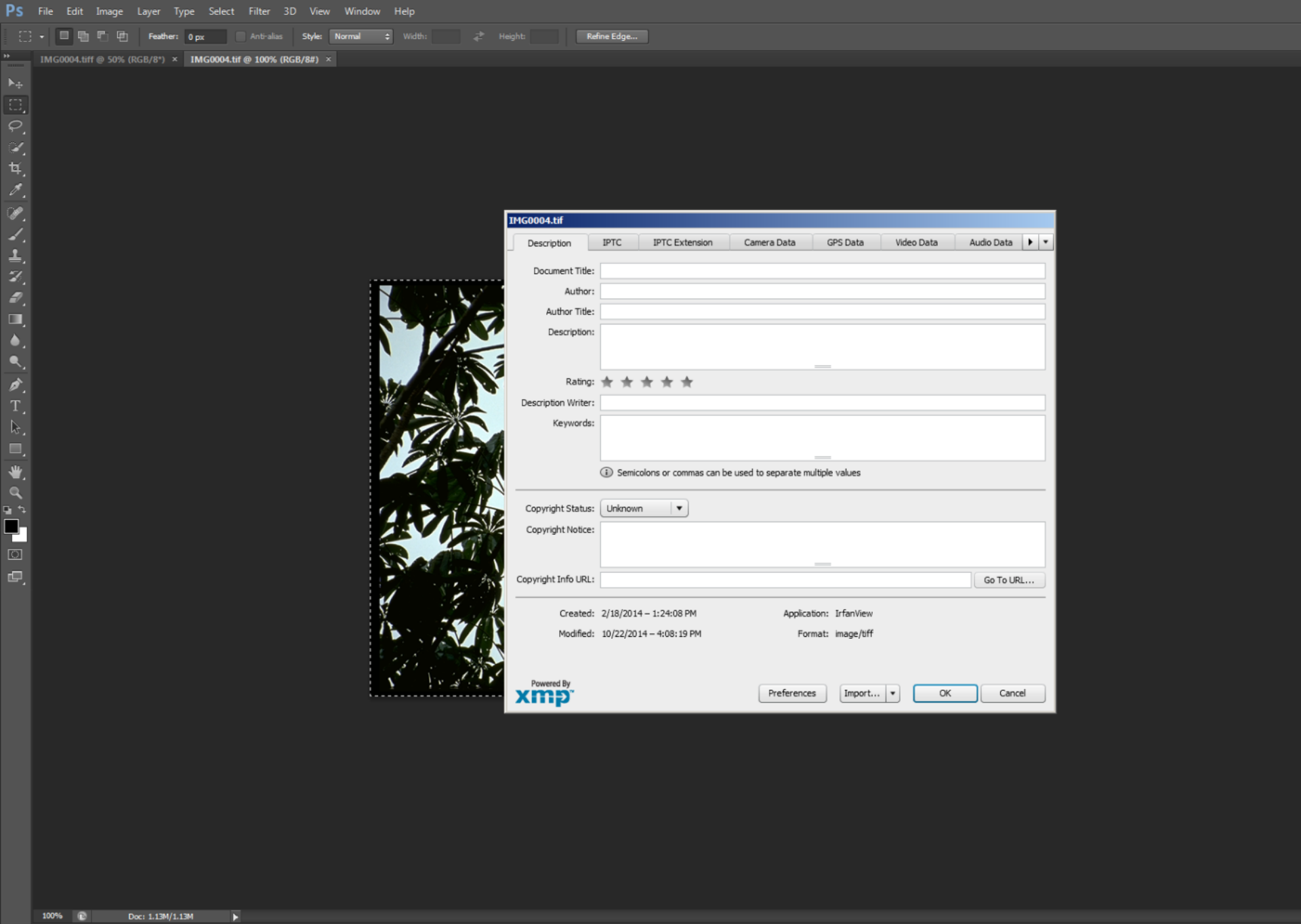
Digital scans of text and images

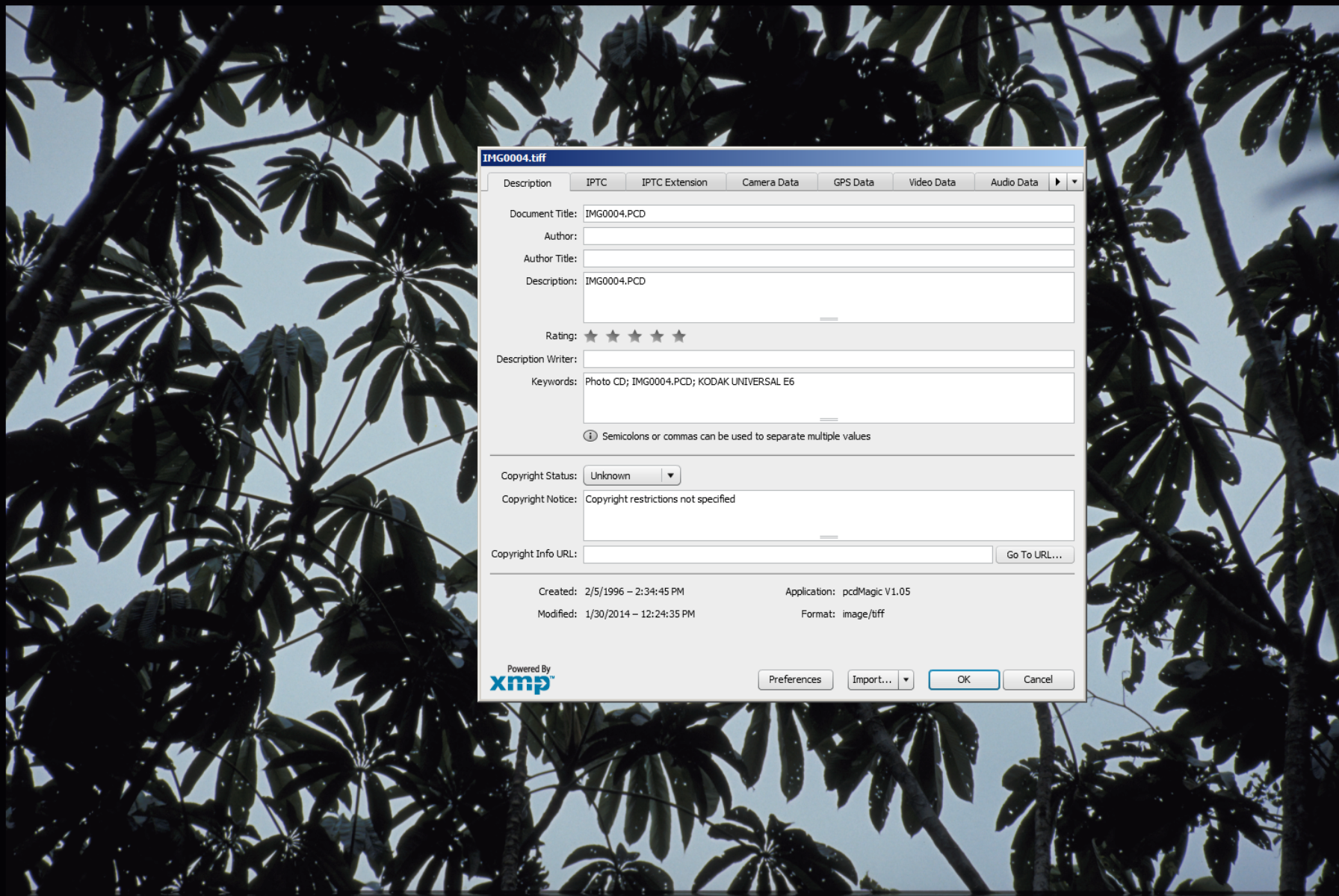
- Uncompressed TIFF with 6,000 pixels on the long axis of the image
- Minimum value is 600 ppi, increasing resolution in intervals of 25 ppi as necessary to achieve a minimum of 6,000 pixels along the long axis resolution.
- For color images, a 24-bit RGB setting is used, yielding 8 bits per color channel.
- For black and white images, a 24-bit RGB setting is used.
- *Note: for images from microfilm, a resolution of 300 ppi grayscale is acceptable.*



Born-digital image
75_ButterflyGarden8Feb.jpg
from SIA 11-281







IMG0004.tiff

Description IPTC IPTC Extension Camera Data GPS Data Video Data Audio Data ▾

Document Title: IMG0004.PCD

Author:

Author Title:

Description: IMG0004.PCD

Rating: ★ ★ ★ ★ ★

Description Writer:

Keywords: Photo CD; IMG0004.PCD; KODAK UNIVERSAL E6

① Semicolons or commas can be used to separate multiple values

Copyright Status: Unknown ▾

Copyright Notice: Copyright restrictions not specified

Copyright Info URL: [Go To URL...](#)

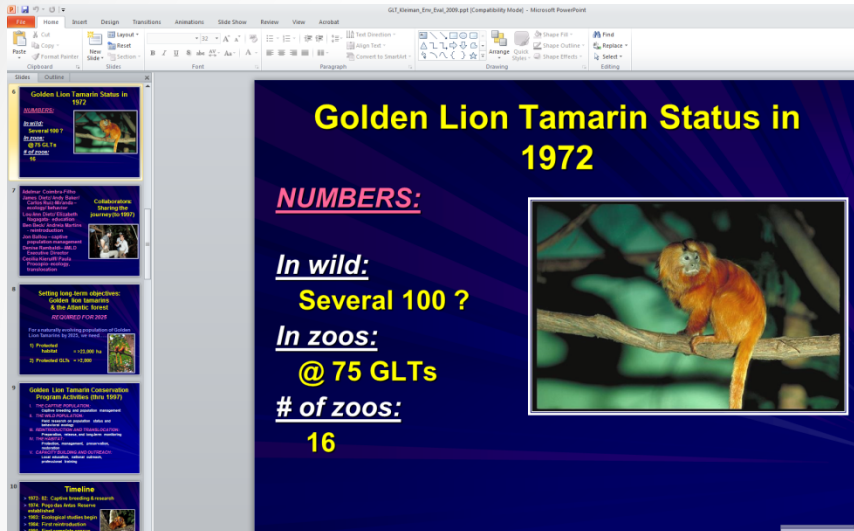
Created: 2/5/1996 – 2:34:45 PM Application: pcdMagic V1.05

Modified: 1/30/2014 – 12:24:35 PM Format: image/tiff

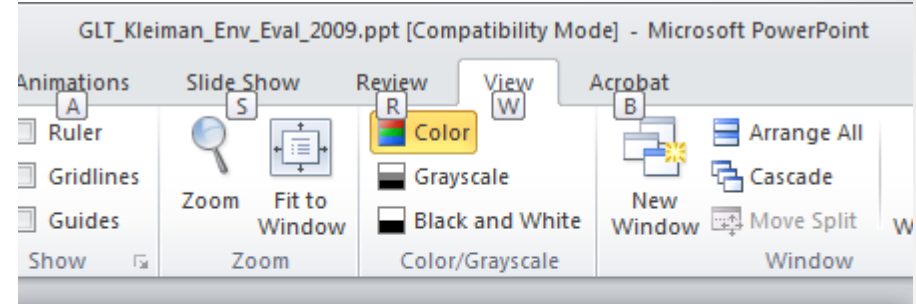
Powered By **xmp**

Preferences Import... ▾ [OK](#) [Cancel](#)

Presentations



PowerPoint presentation from SIA 14-213



In 1972, the golden lion tamarin was headed towards extinction with fewer than 100 in zoos that were breeding very poorly and an unknown number remaining in the wild; at the time, some suspected that there might have been fewer than 200 remaining.

Digital audio standards

- BWF (Broadcast Wave file) format or WAV with a minimum bit depth of 16 and sample frequency of 44.1 kHz for DATs.
- Uncompressed PCM (pulse coded modulation)
- 24-bit and 96 kHz considered optimal.
- AIFF (Mac) is also acceptable.

Audio

al_processing ▾ 07-102 ▾ Source - Copy ▾ Box_1 ▾ First_House ▾

Name ^	Date modified	Type	Size
Unknown Artist	2/11/2013 1:15 PM	File folder	
.DS_Store	2/11/2013 1:27 PM	DS_STORE File	7 KB
Track01.cda	12/31/1994 7:00 PM	Audio CD Track	1 KB
Track02.cda	12/31/1994 7:06 PM	Audio CD Track	1 KB
Track03.cda	12/31/1994 7:12 PM	Audio CD Track	1 KB
Track04.cda	12/31/1994 7:19 PM	Audio CD Track	1 KB
Track05.cda	12/31/1994 7:25 PM	Audio CD Track	1 KB
Track06.cda	12/31/1994 7:32 PM	Audio CD Track	1 KB

BWF MetaEdit

The screenshot displays the BWF MetaEdit application window. On the left is a vertical toolbar with icons for file operations (folders, save), a 'Tech' button, a 'Core' button, a wrench and screwdriver icon, and a help icon (question mark). The main area contains a table with the following data:

FileName	Description	Originator	OriginatorReference	OriginationDate	OriginationTime	TimeReference (translate
1 Biodiversity_2006_1.wav	SIA 12-529, Box 1 Biodiversity_2006_1.wav	US, SIA	Biodiversity_2006_1.wav	2013-03-08	12:05:09	00:00:00.000

Below this table is a smaller window titled 'WaveLab 7.00' containing a metadata table:

IARL	IART	ICMS	ICMT	ICOP	ICRD	IENG	IGNR	IKEY	IMED	INAM	IPRD	ISBJ	ISFT	ISRC	ISRF	ITCH
US, SIA					2013-03-08								WaveLab 7.00			

Born-digital video

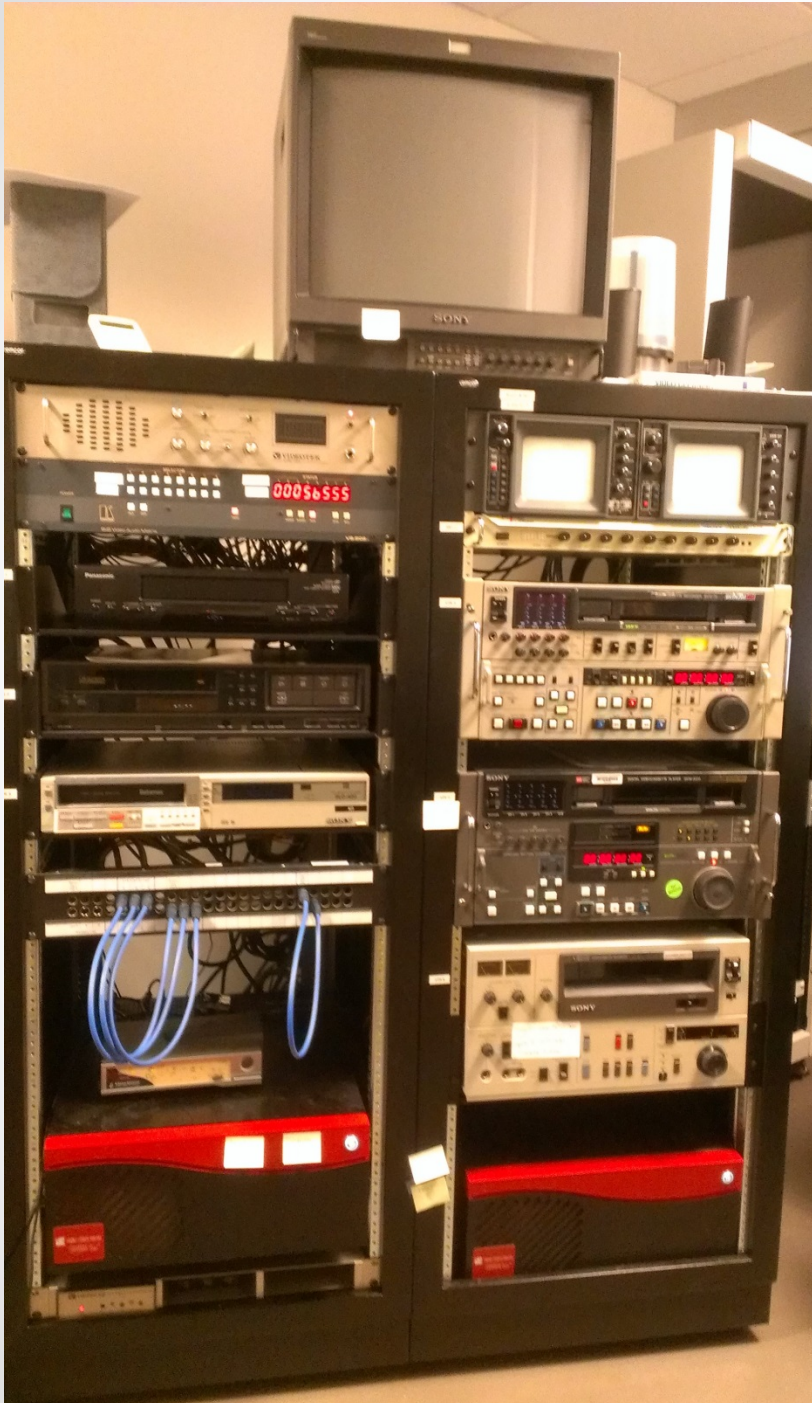


- Authored video DVDs
- Can you view it? One player might work while others will not. Windows Media Player vs VLC

Format: MPEG-4
Format profile: QuickTime
Codec ID: qt
File size: 818 MiB
Duration: 51mn 10s
Overall bit rate mode: Variable
Overall bit rate: 2 234 Kbps
Encoded date: UTC 2014-10-27 18:02:07
Tagged date: UTC 2014-11-04 15:34:15
Writing library: Apple QuickTime

Video

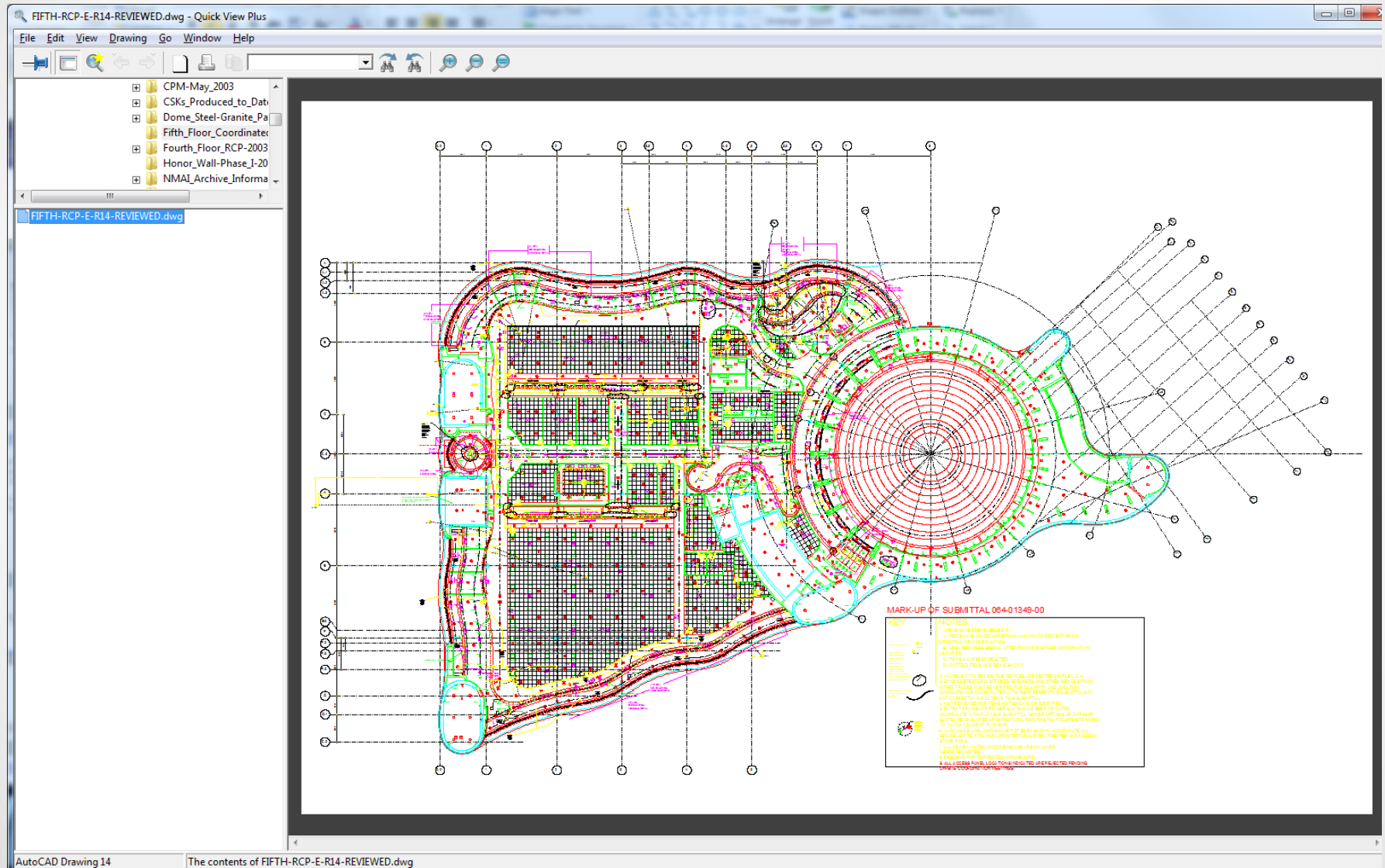
ID: 2
Format: AVC
Format/Info: Advanced Video Codec
Format profile: Baseline@L3.0
Format settings, CABAC: No
Format settings, ReFrames: 3 frames
Format settings, GOP: M=1, N=15
Codec ID: avc1
Codec ID/Info: Advanced Video Coding
Duration: 51mn 10s
Bit rate mode: Variable
Bit rate: 2 000 Kbps
Maximum bit rate: 2 417 Kbps
Width: 640 pixels
Height: 360 pixels
Display aspect ratio: 16:9
Frame rate mode: Constant
Frame rate: 29.970 fps
Color space: YUV
Chroma subsampling: 4:2:0
Bit depth: 8 bits
Scan type: Progressive
Bits/(Pixel*Frame): 0.290
Stream size: 734 MiB (90%)
Writing library: x264 core 129







Analog video

- Analog to digital easier than born-digital video
- Two SAMMA Solos for digitizing analog video tapes at Smithsonian Archives.
 - Done in real time
 - Four outputs – Two for preservation - Motion JPEG2000 in an MXF wrapper, and MPEG-2 in a 4.2.2 format. Two for access/reference -- Windows Media Video and MOV or QuickTime


CAD



Email

Name ▲	Size	Type	Date Modified
 GroupWiseSentSIA.pst	12,913 KB	Office Data File	10/24/2007 12:14 PM
 GroupWiseSentSIAnew.pst	583,313 KB	Office Data File	12/27/2007 10:04 AM
 GroupWiseSIA.pst	1,051,537 KB	Office Data File	12/27/2007 10:04 AM
 SentItemsSIA.pst	1,009 KB	Office Data File	12/27/2007 10:04 AM

Windows [?] [X]

 Windows cannot open this file:

File:

To open this file, Windows needs to know what program created it. Windows can go online to look it up automatically, or you can manually select from a list of programs on your computer.

What do you want to do?

☒ Use the Web service to find the appropriate program

☐ Select the program from a list

OK Cancel

Databases

Microsoft Access				
Table Tools				
Fields		Table		
Undo Redo Cut Copy Paste Delete Select All Find Replace Go To Select Size to Fit Form Switch Windows	Selection Advanced Toggle Filter Toggle Filter	Refresh All New Save Delete Records	Totals Spelling More	Find Replace Go To Select Size to Fit Form Switch Windows
Affil_title				
Affil_city				
Affil_stat				
Affil_icon				
American Jazz Museum	Kansas City	MO	<input checked="" type="checkbox"/>	
Arena Stage	Washington	DC	<input type="checkbox"/>	
Atlanta International Museum	Atlanta	GA	<input type="checkbox"/>	
B&O Railroad Museum	Baltimore	MD	<input checked="" type="checkbox"/>	
Birthplace of Country Music Alliance	Bristol	TN	<input type="checkbox"/>	
Bisbee Mining & Historical Museum	Bisbee	AZ	<input checked="" type="checkbox"/>	
Boys Harbor, Inc.	New York	NY	<input checked="" type="checkbox"/>	
Centro Alameda	San Antonio	TX	<input checked="" type="checkbox"/>	
Chabot Space & Science Center	Oakland	CA	<input checked="" type="checkbox"/>	
Dallas Museum of Natural History	Dallas	TX	<input type="checkbox"/>	
Davenport Museum of Art	Davenport	IA	<input type="checkbox"/>	
Florida International Museum	St. Petersburg	FL	<input type="checkbox"/>	
Florida International University	Miami	FL	<input type="checkbox"/>	
Freedom Museum	Manassas	VA	<input type="checkbox"/>	
Heritage Harbor Museum	Providence	RI	<input checked="" type="checkbox"/>	
Historical Society of Western Pennsylvania	Pittsburgh	PA	<input type="checkbox"/>	
Hubbard Museum of the American West	Ruidoso Downs	NM	<input type="checkbox"/>	

Websites/Social media

You are viewing an archived web page, collected at the request of [Smithsonian Institution](#) using [Archive-It](#). This page was captured on 20:22:51 Oct 03, 2014, and is part of the [Smithsonian Institution Websites](#) collection. The information on this web page may be out of date. See [All versions](#) of this archived page. [Metadata](#) [Enable QA](#) [hide](#)



NATIONAL MUSEUM of American History

KENNETH E. BEHRING CENTER

SHOP **GIVE NOW**

KIDS | EDUCATORS | PRESS

HOME

COLLECTIONS

EXHIBITIONS

VISIT

EVENTS

ABOUT

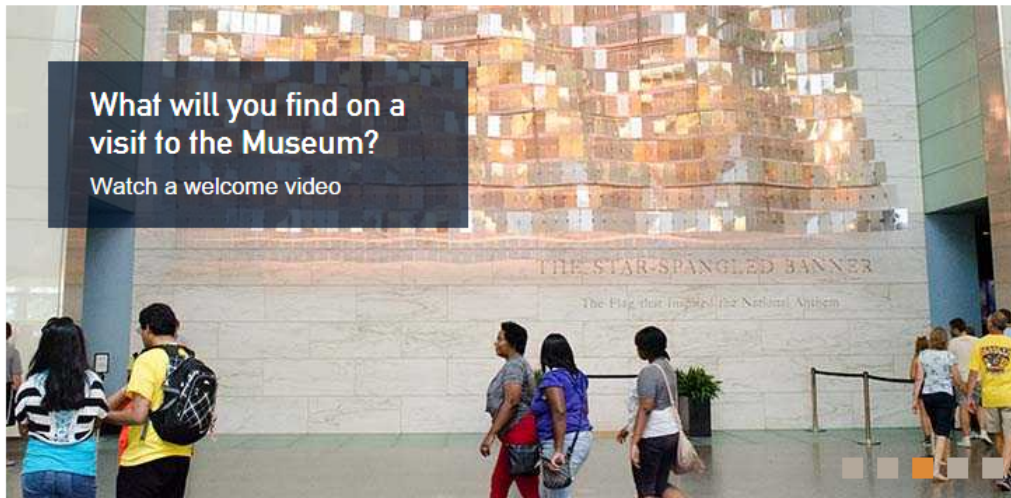
GET INVOLVED

BLOG

CONNECT

What will you find on a visit to the Museum?

Watch a welcome video



PLAN YOUR VISIT



Hours Today: 10:00 am - 5:30 pm

Open every day except Dec. 25

Admission: Free

[Maps & Guides](#)

[Directions](#)

Events & Programs

Harvest of Empire

Join the Museum and the Smithsonian Latino Center for a free screening of the award-winning, 2012 feature-length documentary about migration to the U.S. Oct 3, 2014 5-7 PM

This Day In History

October 3, 1955



Exhibitions



The Price of Freedom:
Americans at War

Command line

```
Command Prompt
Z:\ERD_Base\Preservation_processing\11-281\Source_Copy\Box_3\DNA_Lab_2005\D_1\images-large>dir/S
Volume in drive Z is PVDATA3
Volume Serial Number is B096-E8A0

Directory of Z:\ERD_Base\Preservation_processing\11-281\Source_Copy\Box_3\DNA_Lab_2005\D_1\images-large

11/05/2014  04:58 PM  <DIR>          .
11/05/2014  04:58 PM  <DIR>          ..
02/08/2006  12:03 PM                6,940,032  aplsrvclst_2950.jpg
02/08/2006  12:04 PM                6,562,047  aplsrvclst_2957.jpg
02/08/2006  12:04 PM                8,036,024  cryo_3074.jpg
02/08/2006  12:04 PM               11,334,721  cryo_3098.jpg
02/08/2006  12:04 PM               10,807,058  cryo_3099.jpg
02/08/2006  12:04 PM                8,801,330  dnacap_3302.jpg
02/08/2006  12:04 PM                5,600,562  dnachip_3213.jpg
02/08/2006  12:04 PM                6,512,107  dnachip_3218.jpg
02/08/2006  12:04 PM                7,801,517  gntcanlyzr_3276.jpg
02/08/2006  12:04 PM                3,819,224  h2odrop_2802.jpg
02/08/2006  12:04 PM                4,866,857  h2odrop_2807.jpg
02/08/2006  12:04 PM                5,074,746  h2odrop_2814.jpg
11/05/2014  04:58 PM                 1,736  images-large.lnk
02/08/2006  12:04 PM                6,296,387  parallab_2851.jpg
               14 File(s)              92,454,348 bytes

Total Files Listed:
   14 File(s)              92,454,348 bytes
    2 Dir(s)  613,268,803,584 bytes free

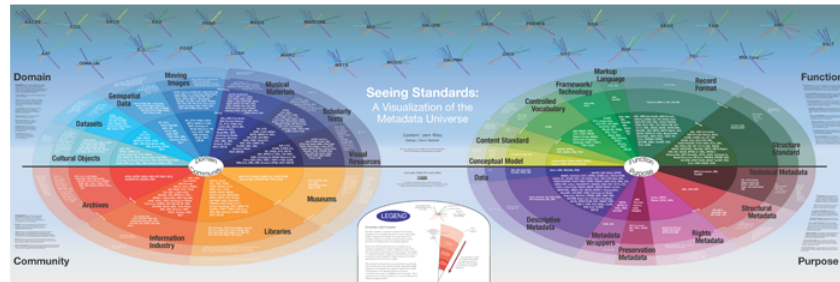
Z:\ERD_Base\Preservation_processing\11-281\Source_Copy\Box_3\DNA_Lab_2005\D_1\images-large>
01/27/2012  04:21 PM  <DIR>          Vanished_Kingdoms
01/27/2012  04:21 PM  <DIR>          Viking_Images
10/20/2011  08:58 AM  <DIR>          Wild_Bill_Longley_2001
               0 File(s)                0 bytes
               27 Dir(s)  613,268,807,680 bytes free
```

- Directory/ file listings
- Run software like ffmpeg, Jhove and Droid

Metadata standards

- Dublin Core
- METS
- PREMIS
- IPTC
- And many, many more

Seeing Standards: A Visualization of the Metadata Universe



[Poster of visualization](#) (PDF, 36in x 108in)

[Metadata standard glossary, poster form](#) (PDF, 36in x 41in)

[Metadata standard glossary, pamphlet form](#) (PDF)

The sheer number of metadata standards in the cultural heritage sector is overwhelming, and their inter-relationships further complicate the situation. This visual map of the metadata landscape is intended to assist planners with the selection and implementation of metadata standards.

Each of the 105 standards listed here is evaluated on its strength of application to defined categories in each of four axes: community, domain, function, and purpose. The strength of a standard in a given category is determined by a mixture of its adoption in that category, its design intent, and its overall appropriateness for use in that category.

The standards represented here are among those most heavily used or publicized in the cultural heritage community, though certainly not all standards that might be relevant are included. A small set of the metadata standards plotted on the main visualization also appear as highlights above the graphic. These represent the most commonly known or discussed standards for cultural heritage metadata.

Content: [Jenn Riley](#)

Design: Devin Becker

Work funded by the Indiana University Libraries White Professional Development Award

Home	Records Management	Preservation	Reference	Assets	Logout		
Print	Image/Object	Audio/Visual	Born-Digital	Conservation	Add New	Advanced	

Collection Number	11-130	Value	B	Record Creator	National Museum of Natural History (U.S.).	
-------------------	--------	-------	---	----------------	--	--

Preservation Sitemap

Title Website Records Dates c. 2009-2011

```

<?xml version="1.0" encoding="UTF-8"?>
<mets:mets
  xmlns:mets="http://www.loc.gov/METS/"
  xmlns:dc="dublincore.org"
  dc:schemaLocation="http://dublincore.org/schemas/xmls/qdc/2008/02/11/dc.xsd"
  xmlns:mods="http://www.loc.gov/mods/v3"
  xmlns:xlink="http://www.w3.org/1999/xlink"
  xmlns:xsi="http://www.w3.org/2001/XMLSchema-instance"
  xsi:schemaLocation="http://www.loc.gov/METS/ http://www.loc.gov/standards/mets/mets.xsd http://www.loc.gov/mods/v3
  http://www.loc.gov/mods/v3/mods-3-1.xsd"
  OBJID="http://siarchives.si.edu/f3347d8a-0672-11e2-8911-0403c90d61ac" LABEL="11-130">
  <mets:metsHdr CREATEDATE="2014-10-30T10:02:09" />
  <mets:dmdSec ID="accession.f3347d8a-0672-11e2-8911-0403c90d61ac">
    <mets:mdWrap MDTYPE="DC" MDTYPEVERSION="2008-02-11">
      <mets:xmlData>
        <dc:identifier>f3347d8a-0672-11e2-8911-0403c90d61ac</dc:identifier>
        <dc:title>11-130</dc:title>
        <dc:description>Website Records</dc:description>
        <dc:creator>National Museum of Natural History</dc:creator>
        <dc:date>2011-09-30</dc:date>
      </mets:xmlData>
    </mets:mdWrap>
  </mets:dmdSec>
  <mets:fileSec>
    <mets:fileGrp ID="10a83343-0fda-408c-b4f7-1d644cfc20ed">
      <mets:fileGrp ID="dela81f9-5519-4d00-9d9f-0aefbf4c4069">
        <mets:fileGrp ID="a25a7686-e63e-48a8-9a13-7ccbd38f6270">
          <mets:file ID="c801abec-3f79-4832-9cee-c38fd581b9d4" SIZE="1370" CREATED="2008-08-29T16:04:58" MIMETYPE="null"
CHECKSUM="96781c71135bda01508a0d1de7a187f4" CHECKSUMTYPE="MD5">
            <mets:Flocat xlink:href="file://sia-digarch01/ERD_Base/Completed/Reference/11-
130/Source/CMTTP_websites/CMTTP_websites/cmtpp/application.cfm" LOCTYPE="URL"/>
            <mets:Flocat xlink:href="file://sia-digarch01/ERD_Base/Completed/Reference/11-
130/Preserved/CMTTP_websites/CMTTP_websites/cmtpp/application.cfm" LOCTYPE="URL"/>
          </mets:file>
          <mets:file ID="dacf40e3-97ca-4482-bd47-169020ede382" SIZE="7973" CREATED="2008-08-11T11:26:16"
MIMETYPE="application/xhtml+xml" CHECKSUM="a631602a3325510a94e95b4a5a72065e" CHECKSUMTYPE="MD5">
            <mets:Flocat xlink:href="file://sia-digarch01/ERD_Base/Completed/Reference/11-
130/Source/CMTTP_websites/CMTTP_websites/cmtpp/cmtppaccess.html" LOCTYPE="URL"/>
            <mets:Flocat xlink:href="file://sia-digarch01/ERD_Base/Completed/Reference/11-
130/Preserved/CMTTP_websites/CMTTP_websites/cmtpp/cmtppaccess.html" LOCTYPE="URL"/>
          </mets:file>
        </mets:fileGrp>
      </mets:fileGrp>
    </mets:fileSec>
  </mets:mets>

```

Preservation format does not always equal access copy

- Where will access be provided?
- Preservation format may not be needed as the access format.
 - *Audio in MP3 format may be acceptable to researcher rather than a higher quality uncompressed WAV or Broadcast WAV file*

SIA Acc. 13-069, Smithsonian Institution, Website Records, 2012

[Submit a reference request about this item](#) | [+ Share](#) | [Print](#)

Summary

Creator: Smithsonian Institution

Title: Website Records, 2012

Date: 2012

Summary: This accession consists of the primary domain of the Smithsonian Institution website as it existed on October 9, 2012. The website contains general information for visitors, volunteers, researchers, donors, and the general public and serves as a portal for other Smithsonian Institution websites. In addition, the domain includes specialized websites maintained by the Museum Conservation Institute; the Office of the Inspector General; the Marine Science Network; the Scientific Diving Program; the Office of Equal Employment and Minority Affairs; the Office of Fellowships and Internships; the Office of Policy and Analysis; and the Office of Sponsored Projects as well as the online Encyclopedia Smithsonian. Materials are in electronic format

Topics: Fund raising, Museum visitors, Museums—Public relations, Research, Special events, Volunteers, Web sites

Subjects: Museum Conservation Institute, Smithsonian Institution Office of Equal Employment and Minority Affairs, Smithsonian Institution Office of Policy and Analysis, Smithsonian Institution Office of the Inspector General, Smithsonian Institution Marine Science Network, Smithsonian Institution Office of Fellowships and Internships, Smithsonian Institution Office of Sponsored Projects, Smithsonian Institution Scientific Diving Program

Form/Genre: Electronic records, Collection descriptions

Local Number: SIA Acc. 13-069

Finding Aids to Official Records of the Smithsonian Institution Archives

Table of Contents

[Collection Overview](#)[Descriptive Entry](#)[Index Terms](#)[Administrative Information](#)[Container List](#)

Accession 13-069

Smithsonian Institution

Website Records, 2012

COLLECTION OVERVIEW

Repository: [Smithsonian Institution Archives](#), Washington, D.C. Contact us at osiaref@si.edu.

Creator: Smithsonian Institution

Title: Website Records

Dates: 2012

Quantity:



THE SMITHSONIAN TORCH

AN EMPLOYEES' NEWSPAPER, PUBLISHED MONTHLY
 EDITORIAL BOARD: JAMES BRADLEY, PAUL H. OEHSER, WILLIAM WARNER
 EDITOR: ELIZABETH BEVERLEY
 PHOTOS: ALBERT J. ROBINSON

SMITHSONIAN REGENT



Vice President Humphrey opens "The Face of Poverty," a special photographic exhibit prepared by the Office of Economic Opportunity, now showing in the gallery on the second floor of MHT.

Hubert H. Humphrey, elected Vice President of the United States on Nov. 3, 1964,

STAFF PUBLICATIONS

Dr. Leonard P. Schultz (MNH-Z) contributed two chapters to the National Geographic's recently published *Wondrous World of Fishes*. Dr. Alexander Wetmore, former Smithsonian Secretary, is the principal author of the National Geographic's recently published book *Song Birds of North America*; the second volume is in press.

SI ATTENDS AAUP ANNUAL MEETING

The Smithsonian was represented at the annual meeting of the Association of American University Presses by Paul H. Oehser, Louise Heskett, and Al Ruffin (E & P). The meeting was held in Lexington, Ky., on May 23-25. Following the meeting the three visited the Kingsport Press at Kingsport, Tenn.



BOWLING LEAGUE TEAMS END YEAR

The Indians won the competition in the Smithsonian Institution Bowling League for the season, winning by five games. Second in line were the Athletics. The banquet to close the season was held on June 11th.

Below are the names of the officers and members of the teams.

Officers—President, Harry Klotz; vice president, Adele Bock; secretary-treasurer, Vera Gabbert; statistician, Nadya Kayaloff.

Teams — *Athletics*: Jack Scott, Linda Shaw, Harry Klotz, Rhoda Stolper, John Widener. *Pirates*: William Klein, Mary Cook, Vic Elstad, William Cogswell, Walter Shropshire. *Senators*: Robert Shaw, Henry Williams, Conrad Vogel, Adele Bock, Maria Hoemann. *Dodgers*: Richard Todd, Wayne Powars, Paul Marsh, Vera Gabbert, Anna Babcock. *Tigers*: Sanford Cooper, Lowell Henkel, Richard Froeschner, Mario Kidwell, Helena Weiss. *Cubs*: Willis Wirth, Ron Hodges, Laura Sabrosky, Walter Lewis, Helen Gaylord. *Cardinals*: Curt Sabrosky, Nancy Foster, Ray Wise, Nadya Kayaloff, Bela Bory. *Indians*: Sylvan Sean, Jessie Shaw, Ed Todd, Bud Sayre, George Shockey. *Twins*: Richard Kanost, Harvey Drack, Grace Cooper, Joan Vogel, Al Goldman. *Braves*: Jim Condon, Esther Miller, Virginia Bryson, Joe Biggs, Elmo Miller.

flickr

Sign Up

Explore

Upload



Sign In



1500. Mesquite Tree. Near Leon, (?), Mexico

Smithsonian Institution

MESQUITE TREE

★ 3



1642

SEINING IN LA VIGA

Scott



2113

COSTA RICA

Scott



2517

Scott



2114

HERBS

Scott



2466

RIO ZULA

Scott



2177

ATRIFLE SHY

Scott

feedback

Born Digital basics

The screenshot shows a web browser window with the URL odc.org/research/publications/library/2012/2012-06r.html. The page has a purple navigation bar with links: Activities, Partnership, People, News & Events, Publications, Opportunities, About Us, and Contact Us. Below the navigation bar, there's a breadcrumb trail: Research > Publications > OCLC Research Reports > Demystifying Born Digital Reports. The main heading is 'Demystifying Born Digital Reports' with a subheading '#bdreport'. To the left, there's a sidebar with 'OCLC Research Reports' and 'Demystifying Born Digital Reports'. The main content area features two articles. The first article is 'You've Got to Walk Before You Can Run: First Steps for Managing Born-Digital Content Received on Physical Media' by Ricky Erway, OCLC Research. It includes a paragraph about the report's purpose and a link to 'Download the report (.pdf. 45K/5 pp.)'. The second article is 'Swatting the Long Tail of Digital Media: A Call for Collaboration' by Ricky Erway, OCLC Research, with a paragraph about its collaborative approach. A grey box on the right provides contact information for Ricky Erway, Senior Program Officer at OCLC Research, with email erwayr@oclc.org and phone +1-650-287-2125.

Demystifying Born Digital Reports

OCLC Research Reports

Demystifying Born Digital Reports

Demystifying Born Digital Reports

#bdreport

You've Got to Walk Before You Can Run: First Steps for Managing Born-Digital Content Received on Physical Media

by Ricky Erway, OCLC Research

This report is intended for anyone who doesn't know where to begin in managing born-digital materials. It errs on the side of simplicity and describes what is truly necessary to start managing born-digital content on physical media, and it presents a list of the basic steps without expanding on archival theory or the use of particular software tools. It does not assume that policies are in place or that those performing the tasks are familiar with traditional archival practices, nor does it assume that significant IT support is available.

[Download the report](#) (.pdf. 45K/5 pp.)

Swatting the Long Tail of Digital Media: A Call for Collaboration

by Ricky Erway, OCLC Research

This report urges a collaborative approach for conversion of content on various types of digital media. As with First Steps, the document refers only to born-digital material on physical media. This essay is intended for managers who are making decisions on where to invest their born-digital time and money. It should help them understand that any expectations

For More Information:

Ricky Erway
Senior Program Officer
OCLC Research
erwayr@oclc.org
+1-650-287-2125

Digital Preservation Q&A

qanda.digipres.org

Apps
Smithsonian Archiv...
Archive-It - Smithso...
Archive-It: Partner L...
Open Text Media M...
Home - SI Website a...
Gale SI Mags
Gale Databases
»
Other bookmarks

Email or Username
Password
Remember
Login
Log In
Register

Digital Preservation Q&A

Questions
Unanswered
Tags
Categories
Users
Ask a Question
About

Recent questions and answers

+1
vote

1
answer

106
views

What are some techniques for safely preserving virus-infected files?

answered 1 day ago by anjackson (2,040 points)

viruses

+1
vote

1
answer

1,278
views

Is Multipage Tiff an acceptable Preservation format?

answered 6 days ago by johanvanderknijff (780 points)

multipage-tif

+1
vote

2
answers

534
views

Best Practices for Accessioning Email from Web Applications?

answered Oct 3 by KateTasker (480 points)

acquisition
email

+3
votes

1
answer

827
views

What are the best examples of file format action plans?

answered Oct 1 by leegnilsson (180 points)

planning
file-formats

+3
votes

1
answer

95
views

Any written policies on retention of digital surrogates?

answered Oct 1 by alisdavidson (140 points)

policies
surrogates
retention

+1
vote

0
answers

52
views

Are there frameworks or standards for migration testing available?

asked Sep 24 by mgallinger (780 points)

standards
storage-migration
testing
frameworks

+1
vote

0
answers

131
views

External 3.5 disk drive recommendation?

asked Sep 23 by Matt Gorzalski (130 points)

+4
votes

4
answers

310
views

What tools do you use for the ongoing monitoring of checksums?

answered Sep 22 by sarah.barsness (740 points)

fixity
checksums
tools
workflow
software

Welcome to Digital Preservation Q&A, where you can ask questions and receive answers from other members of the community.

75 questions

125 answers

126 comments

1,220 users

Recent questions and answers

Most popular tags

acquisition
file-formats
tools
web-archiving
technology
meta
forensics
hardware
standards
media
fixity
disk-imaging
aprasial
policies
software-licensing
terminology

More information



*Photo by Cory Doctorow
Chicago Tribune elevator, Chicago, Ill.
Creative Commons: Attribution-ShareAlike
2.0 Generic*

- PSAP
- BitCurator
- BagIt
- Fixity tool
- Jhove
- Droid
- NDSA PDF/A 3 report
- BWF MetaEdit

And more information



*Photo by Cory Doctorow
Chicago Tribune elevator, Chicago, Ill.
Creative Commons: Attribution-ShareAlike
2.0 Generic*


- ffmpeg
- MediaInfo
- MIT's FAÇADE
- The Art Institute of Chicago Digital Design Data report
- CERP
- ePADD
- Command line tutorial
- *From Theory to Action: "Good Enough" Digital Preservation Solutions for Under-Resource Cultural Heritage Institutions -- POWRR*
- Digipres Commons

The Smithsonian Institutio x Internet Archive Wayback x The requested URI was no x The Smithsonian Institutio x

arquivo.pt/wayback/wayback/id490index1?year=1996&r_pos=1&r_t=1&col_pos=1&col_tot=6&l=pt&sid=B7499ED3A47E690929441ED58B98C

Apps Smithsonian Archiv... Archive-It - Smithso... Archive-It: Partner L... Open Text Media M... Home - SI Website a... Gale SI Mags Gale Databases » Other bookmarks

Arquivo da Web Portuguesa - ligações exteriores, formulários e caixas de pesquisa poderão não funcionar corretamente. URL: http://www.si.edu/ Data: 20:44:18 13 Outubro, 1996 [lesconder]



If this server is busy, you may want to visit the [Smithsonian mirror site](#) in California.

Welcome

A brief video clip of the Secretary welcomes you to the Web. Audio only is also available but requires software that can simultaneously run audio and visual information or an audio player. Links to an [Overview of Smithsonian Museums](#), a description of [Navigating the Electronic Smithsonian](#), a [search capability](#) to explore all aspects of the Institution, the [Encyclopedia Smithsonian](#) (answers to frequently asked questions about the Smithsonian and other topics), and information on [Planning a Visit to the Smithsonian](#) are available here as well.

150th Anniversary

This section contains a message from the Secretary of the Smithsonian Institution, both in text and audio, and an electronic "celebration" of the Institution's first 150 years. The "virtual" site of the 150th Anniversary, it is dedicated to both the history and future of the Smithsonian.

What's New

This section includes information on [new and temporary exhibitions](#) for most of the Smithsonian's museums and galleries and the National Zoo. It also includes [new and recent additions](#) to the Smithsonian Web Server. And a section which describes [Electronic Smithsonian](#). Finally, [press releases](#) from the Smithsonian are available electronically.

Thank you!

- Contact me at SchmitzfuhrigL@si.edu

Two young boys stand on the National Mall holding lunchboxes as they look at the north front of the Smithsonian Institution Building.

● *-- Smithsonian Institution Archives*

