

THE INCIDENT COMMAND SYSTEM

@ the repository level

David W. Carmicheal

BEFORE THE INCIDENT COMMAND SYSTEM

Life before the Incident Command System



- California
October 1970
- 773 separate wildfires
 - 576,000 acres
 - 722 homes
 - 16 dead

Life before the Incident Command System



- California
October 1970
- 20,000 responders
 - 1,000 separate agencies
 - Incompatible equipment
 - Miscommunication
 - Divided command

THE INCIDENT COMMAND SYSTEM

was developed to
handle chaos

What is ICS?

A management structure that:

- Is standardized
- Supersedes that of responding agencies
- Does not follow normal management pattern

What is ICS?

Standardized:

- Positions
- Responsibilities
- Facilities
- Reporting
- Forms
- Language

Why Should You Care?

Why Should You Care?

- External reasons
 - Used 'on-scene'
 - Multi-jurisdictional

Why Should You Care?

- External reasons
 - Used 'on-scene'
 - Multi-jurisdictional
- Internal reasons
 - Applicable to all hazards
 - Scalable
 - Cost-effective
 - Effective as response or pre-planning tool

What is ICS?

The Incident Command System is a *temporary, super-charged management structure* that you implement during times of stress.

AN INCIDENT

AN INCIDENT

is anything that threatens
lives ♦ property ♦
the environment

AN INCIDENT

requires you to
respond

RESPONSE PHASES



Who initiates initial response?



Who initiates response?



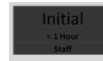
Who initiates response?



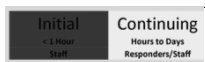
Who initiates response?



Who initiates response?



Who initiates response?



Who initiates response?



How is response conducted?

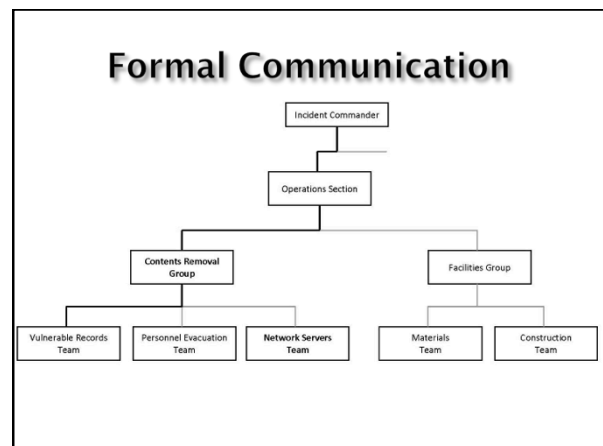
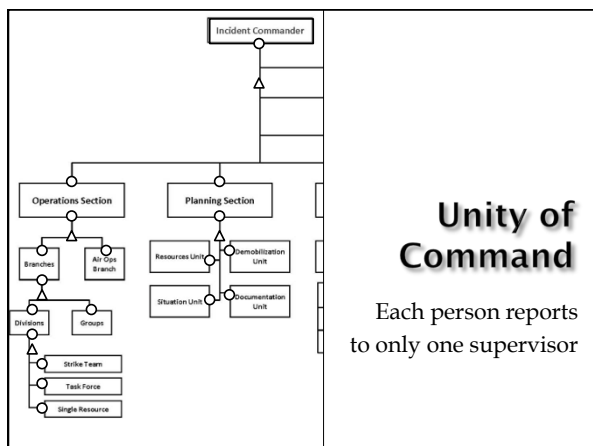
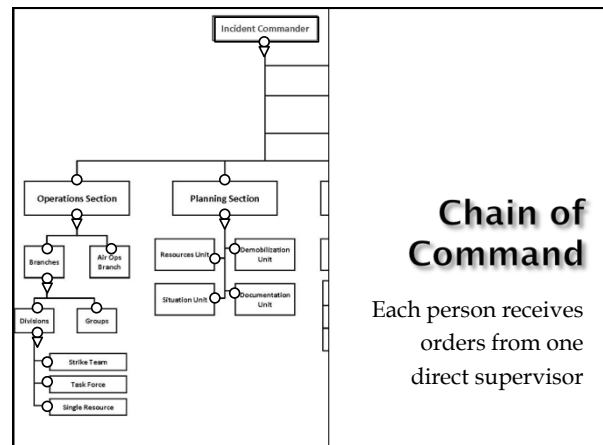
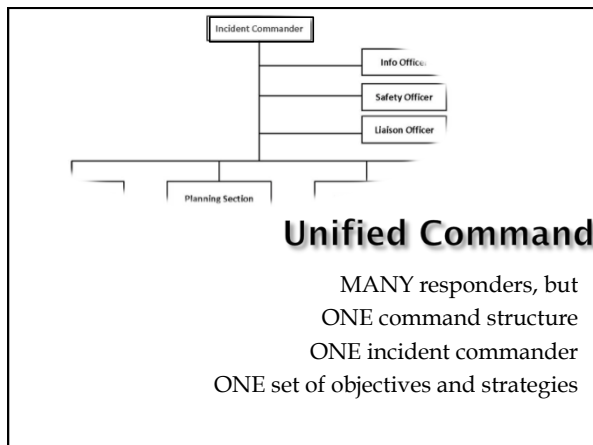
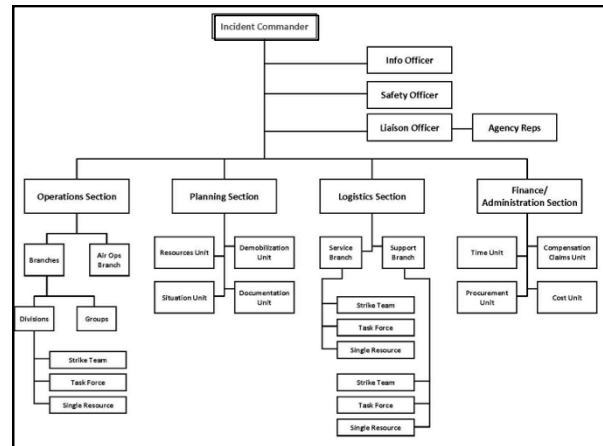
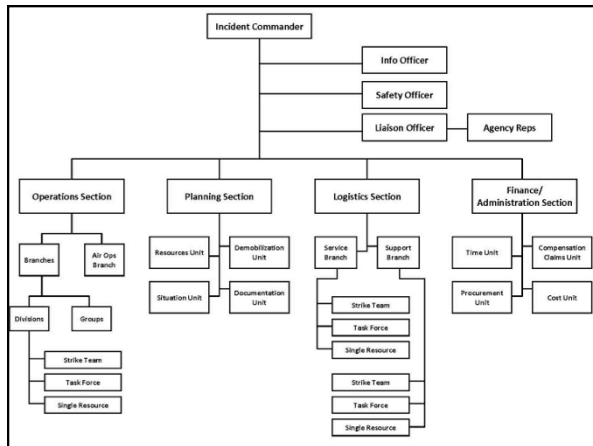


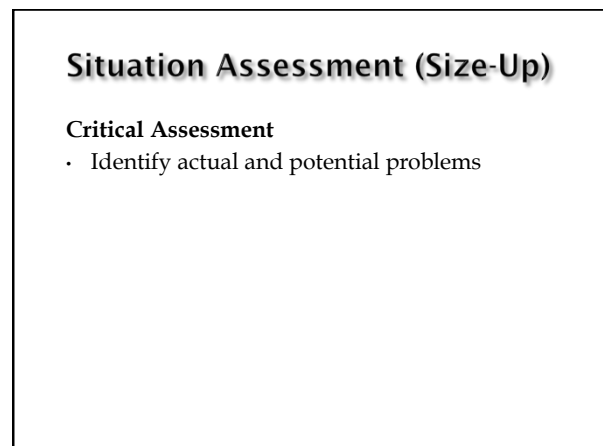
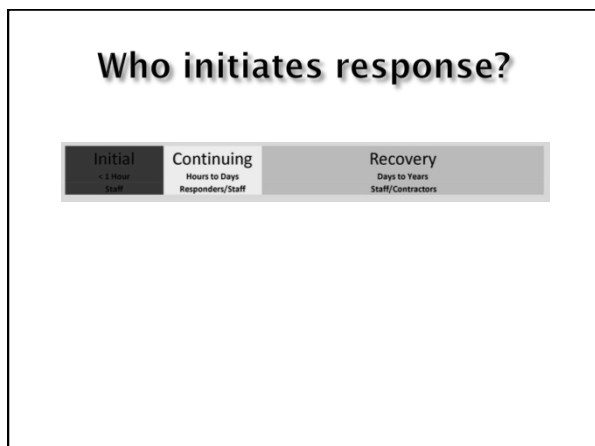
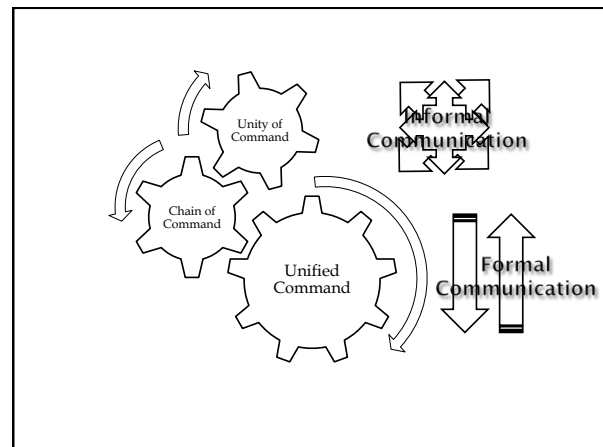
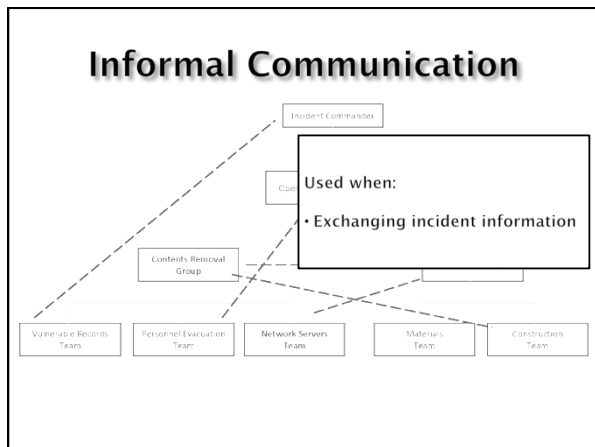
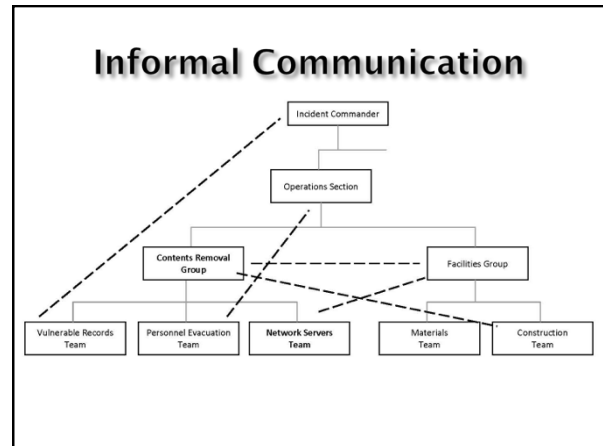
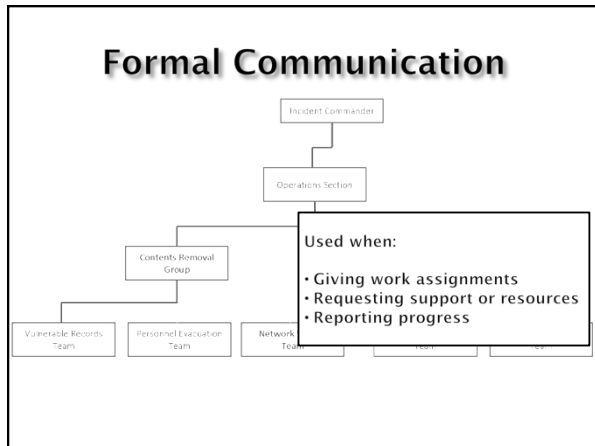
Organizing a response

ICS provides total coordination of the response

A very top-down (military-style) approach because

- decisions need to be carried out rapidly and (generally) without question, and
- resources need to be distributed based on a centralized, coordinated plan.





Situation Assessment (Size-Up)

Critical Assessment

- Identify actual and potential problems
 - Water is running and doing damage
 - **Artifacts in water and being damaged**

Situation Assessment (Size-Up)

Critical Assessment

- Identify actual and potential problems
 - Water is running and doing damage
 - **Artifacts in water and being damaged**
- Tackle the most significant problem

Which is the most significant problem?

1	Life/safety

Which is the most significant problem?

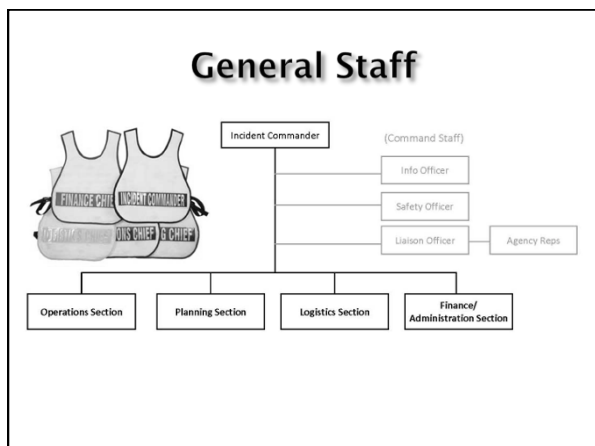
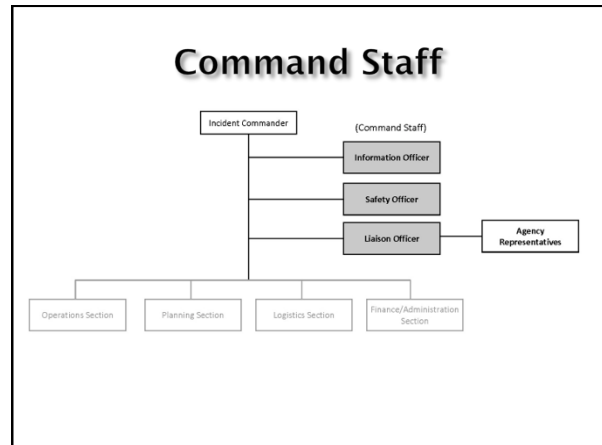
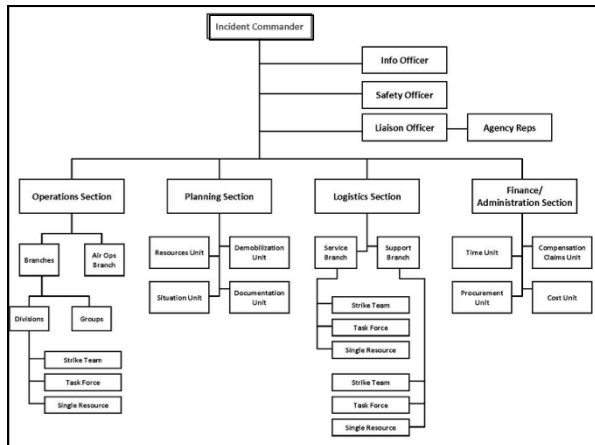
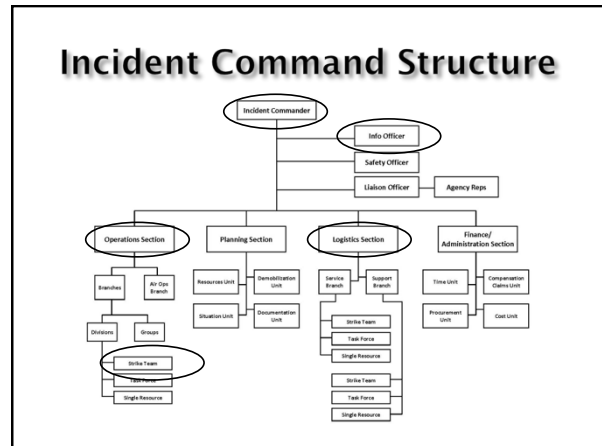
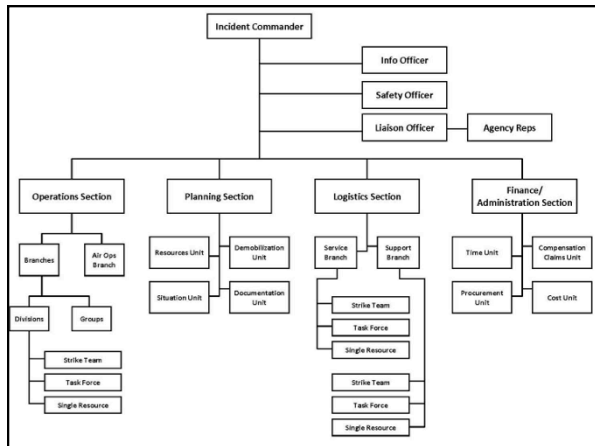
1	Life/safety
2	Incident stabilization

Which is the most significant problem?

1	Life/safety
2	Incident stabilization
3	Property preservation (including collections)

The Incident Action Plan

1	What do we want to do?
2	Who is responsible to do it?
3	What is the timeframe?
4	Other: communications, safety



- ### After Action Report
- Overview of the incident
 - Goals and objectives of response
 - Analysis of outcomes
 - Analysis of performance
 - Summary
 - Recommendations

THE INCIDENT COMMAND SYSTEM

Learning ICS

- Train all employees
- Practice
- Use it for minor responses
- Use it to plan a major event

Incident Command System

The Incident Command System is a
temporary, super-charged management structure
that you implement during times of stress.

QUESTIONS?

The Incident
Command System
@ the repository level

David W. Carmicheal
www.RescuingRecords.com